



Installation Manual

PrivaSEE

Single Track Sliding Frameless System

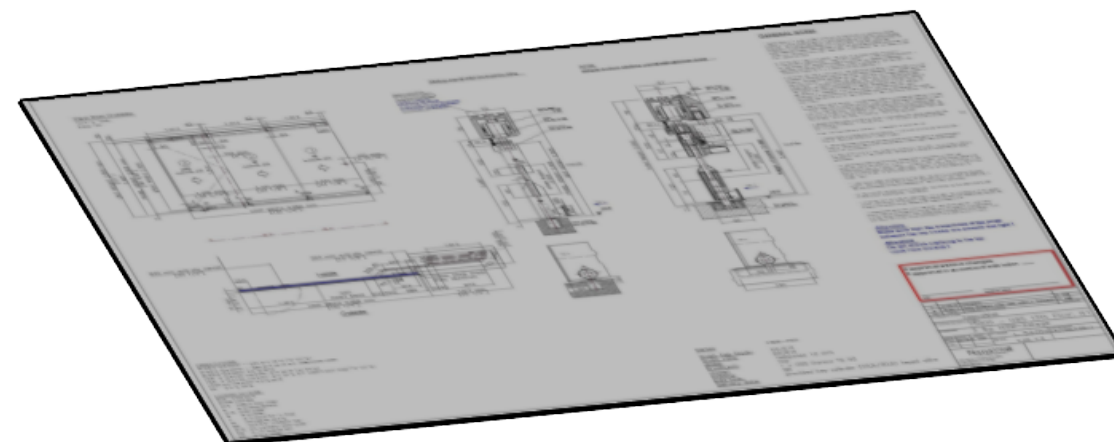
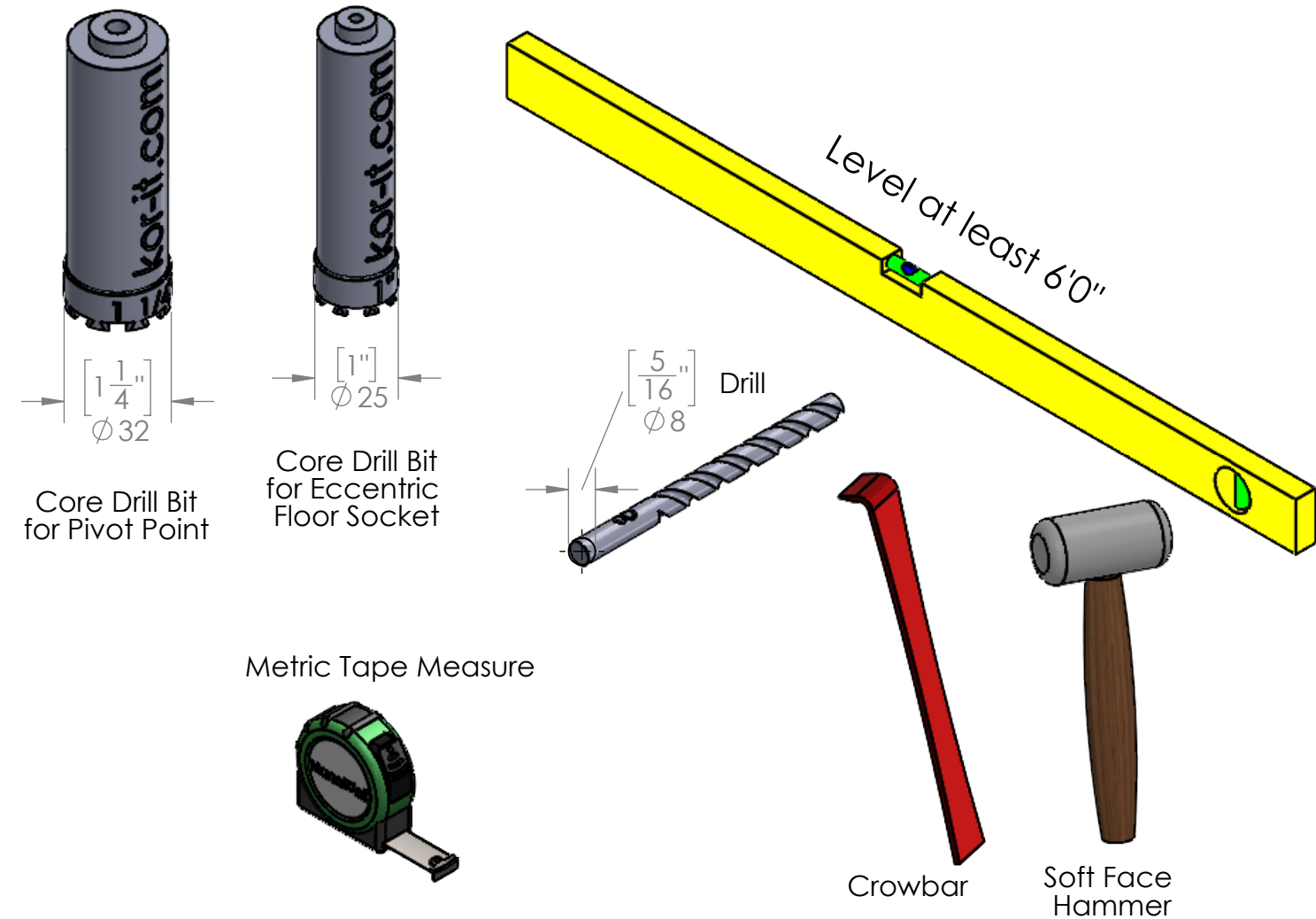
Table of Contents

Rev. October 14 2020

Page

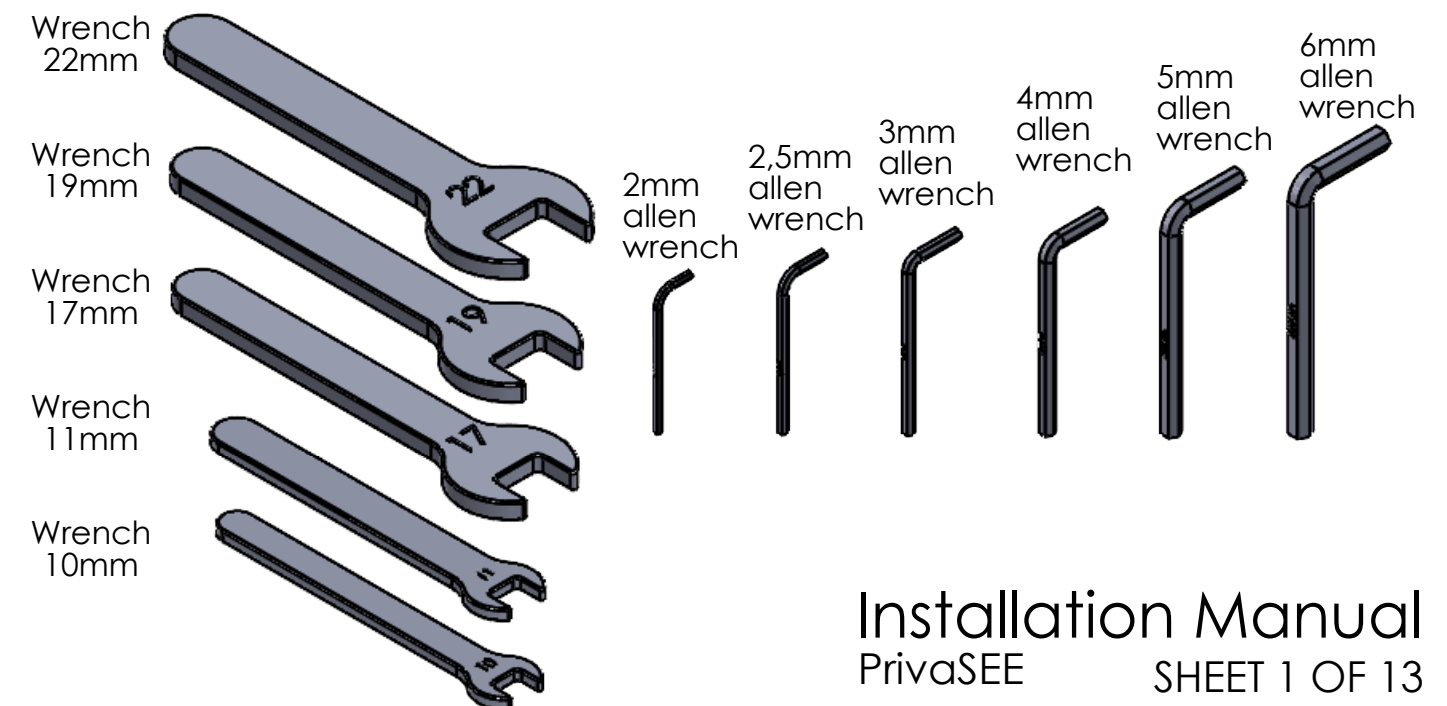
1. Required Tools
2. Rough Opening and Unit Dimensions
3. Head Track in "kd" (knocked down) Condition
4. Head Track Connector for Sidejamb
5. Assembly of Head Track
6. Head Track Shimming
7. Installation of Floor Closer for Single Action Offset End Panel
8. Installation Sequence of Panels
9. Panel Alignment and Height Adjustment
10. Drilling Holes for Floor Sockets
11. Panel Installation for non-entry Single Action Offset End Panel and Single Action End Panel with Floor Closer
12. Field Applying Vertical H- and h-gaskets and Height Adjustment of Bottom Compression Seal
13. Installation of Mortise Cylinder (on Inside only)

TOOLS



NanaWall Product Drawing

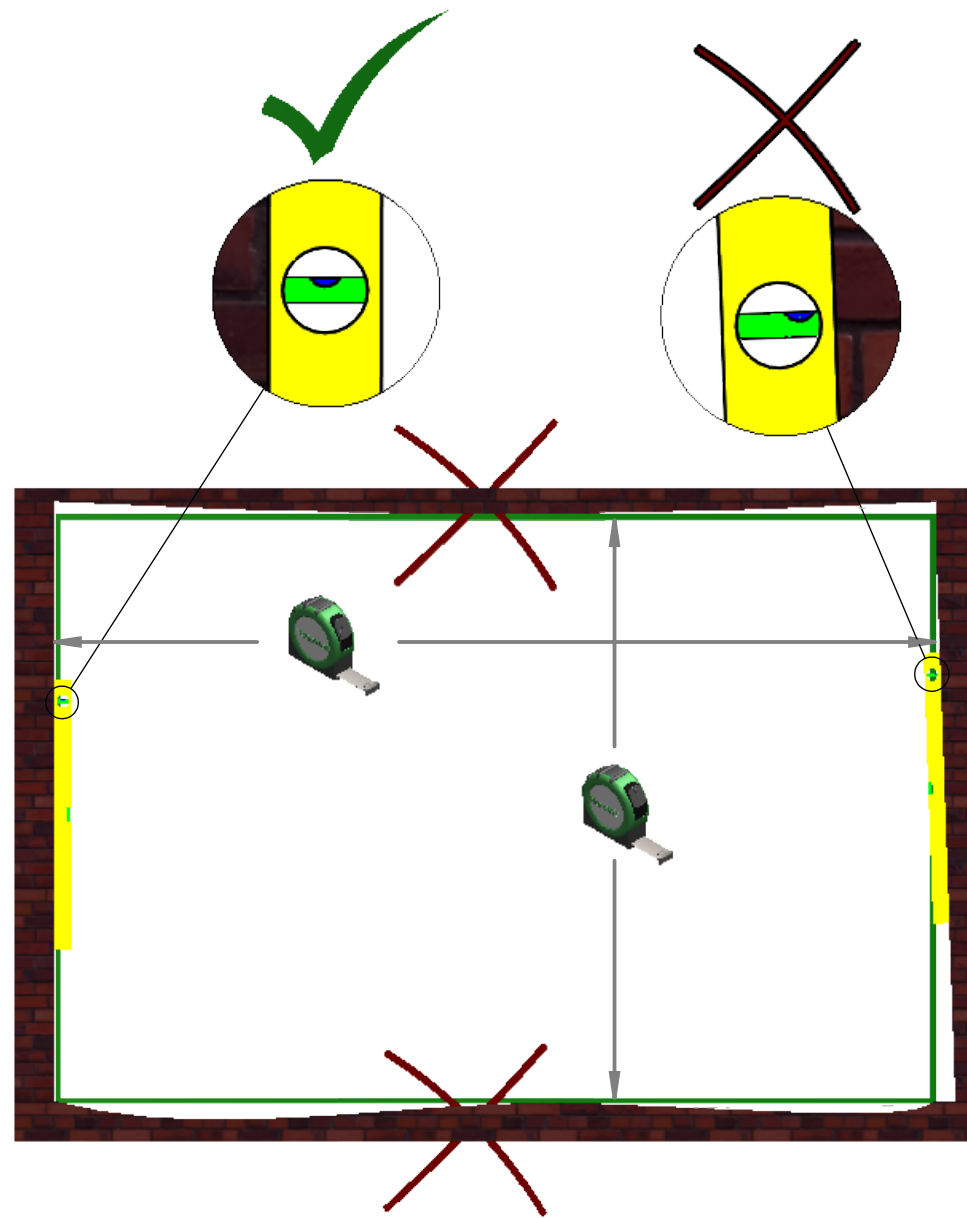
Metric Tools Supplied in Accessory Box



Installation Manual
PrivaSEE SHEET 1 OF 13

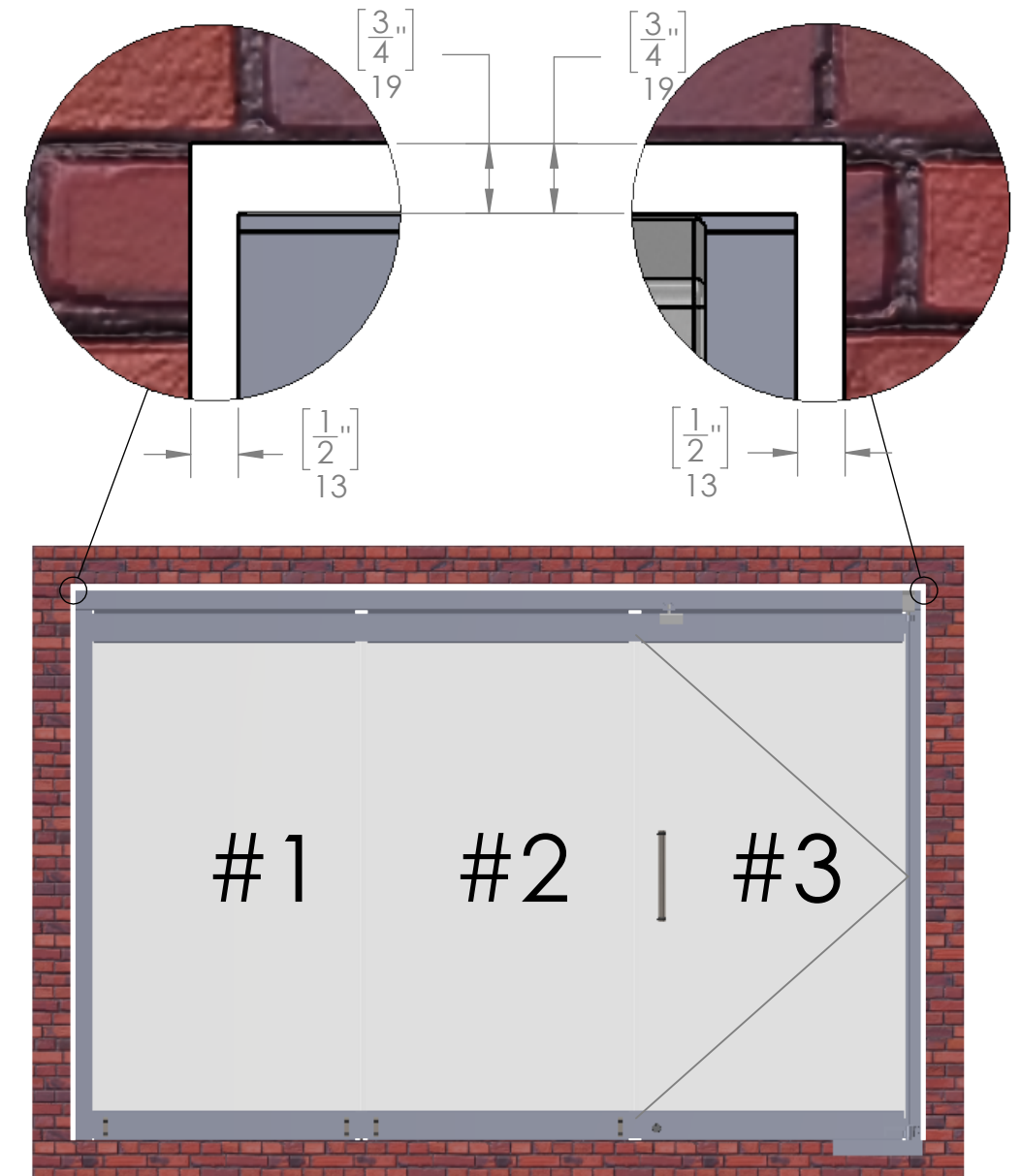
Rough Opening Dimensions

- after applying all deadloads max. deflection of header the lesser of $L/720$ or $1/4"$
- the weight of a panel with $1/2"$ glass is 8 lbs/sqft

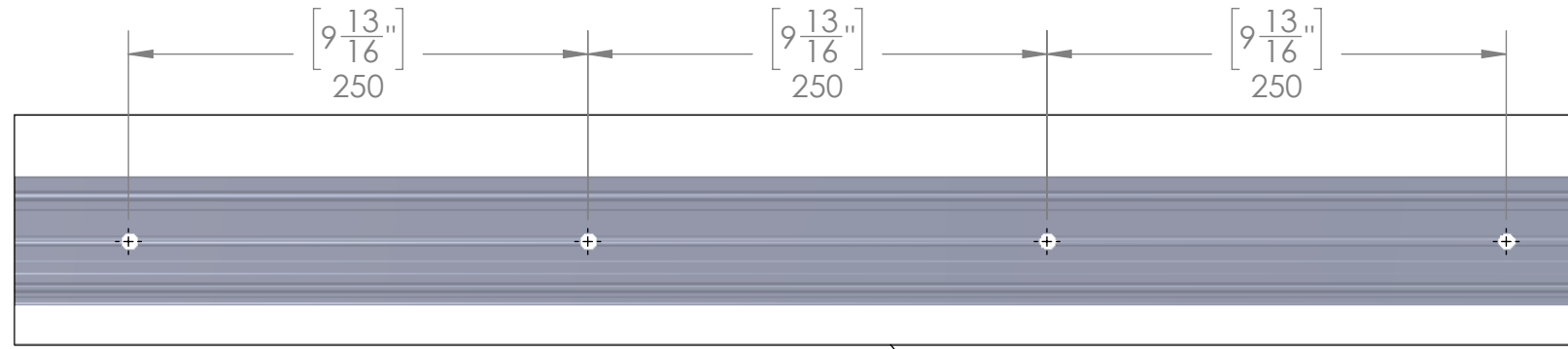


Unit Dimensions

- leave enough shim space to surrounding condition

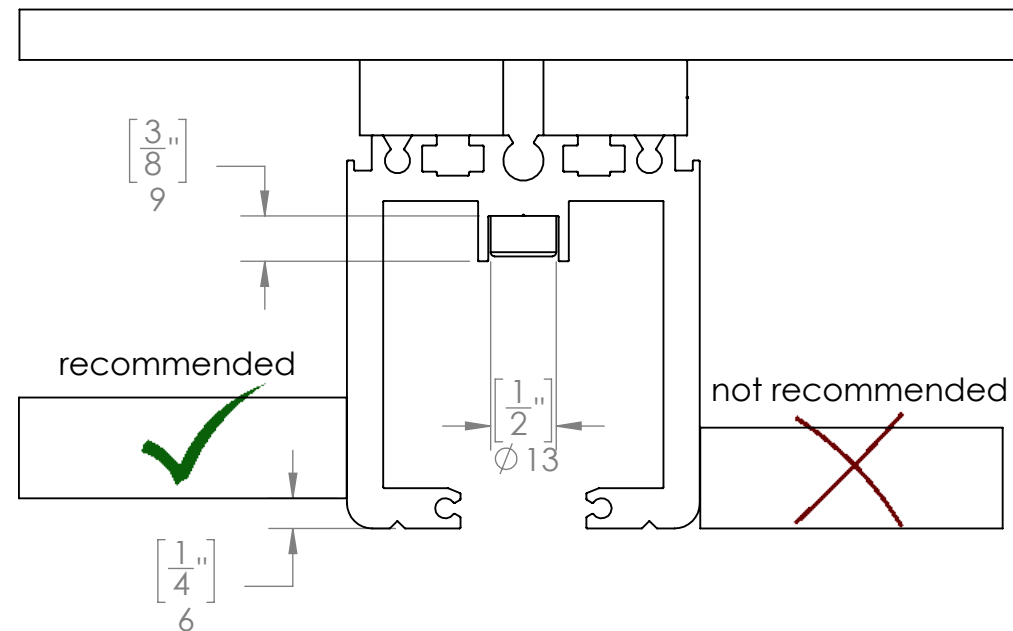
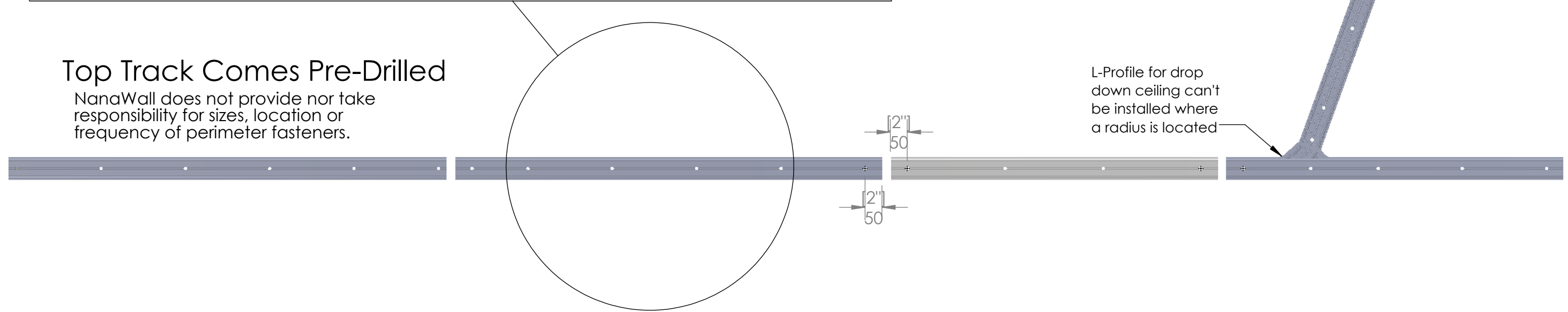


Head Track in "kd" Condition



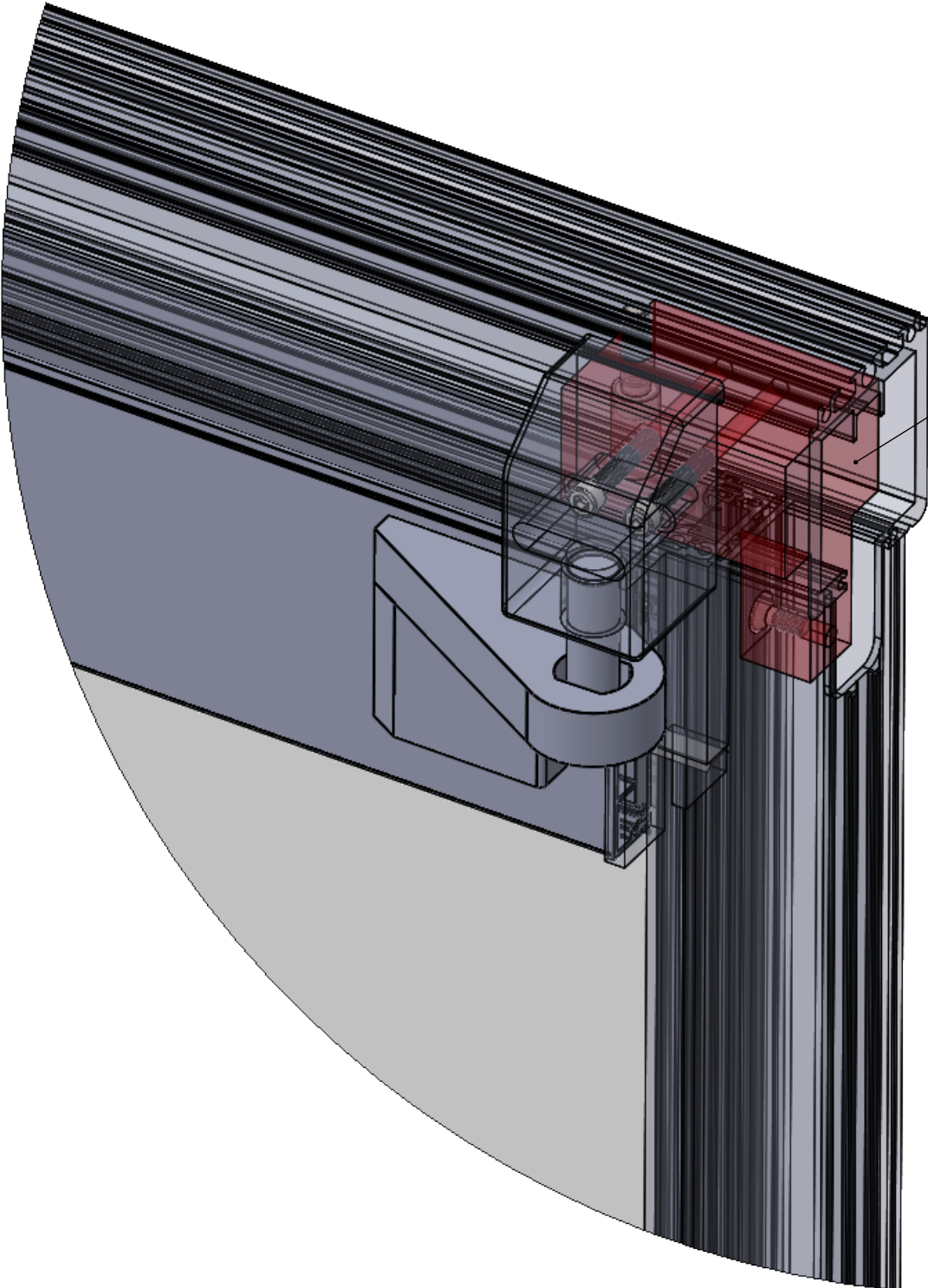
Top Track Comes Pre-Drilled

NanaWall does not provide nor take responsibility for sizes, location or frequency of perimeter fasteners.



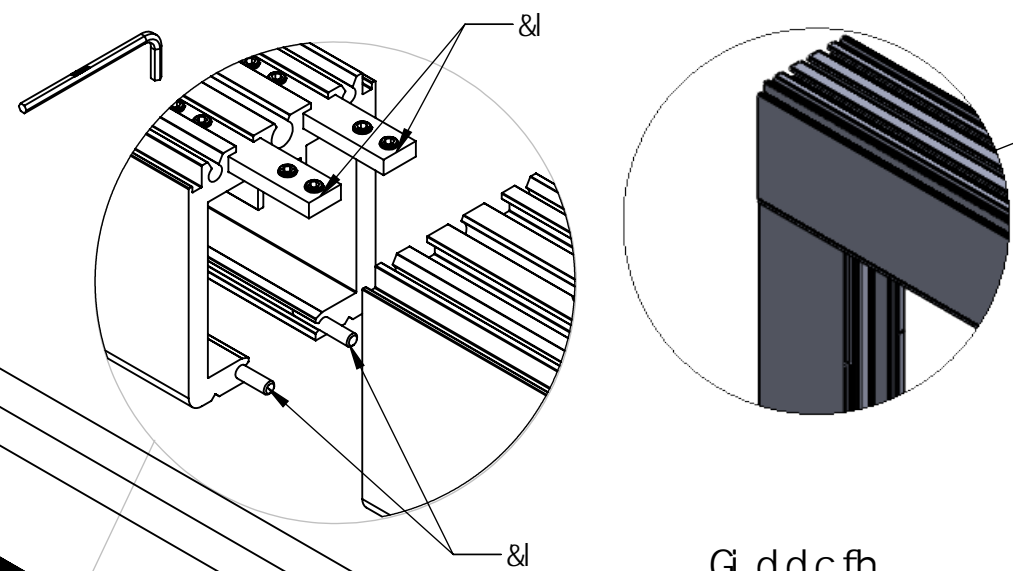
IF YOU WANT TO RECESS THE HEAD TRACK INTO THE CEILING, WE RECOMMEND TO LEAVE 1/4" (6MM) VISIBLE TO AVOID SCRUB MARKS FROM THE TOP BRUSH SEALS IN THE AREA OF THE SWING PANEL, STACKING BAYS AND 90° CORNER TURNS.

<YUX 'FUW_ '7 cbbYWrcf'Zcf'G]XY '>Ua V

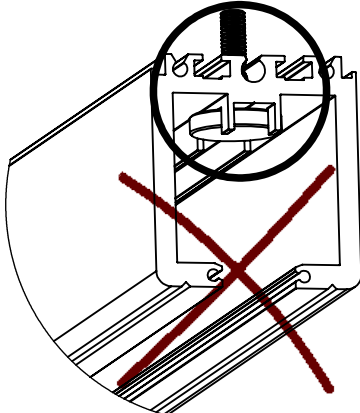
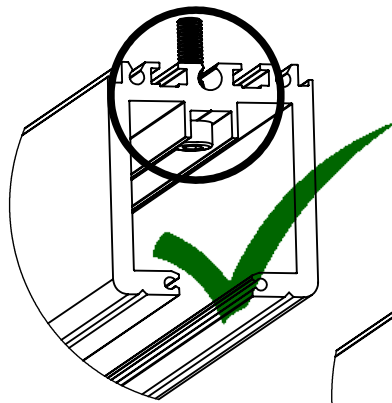
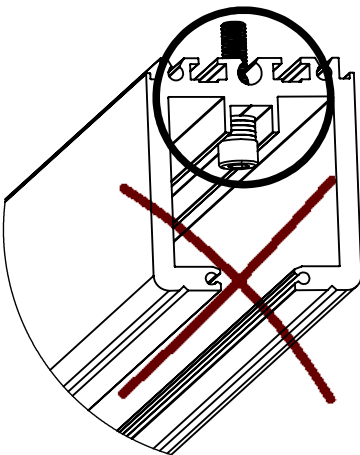
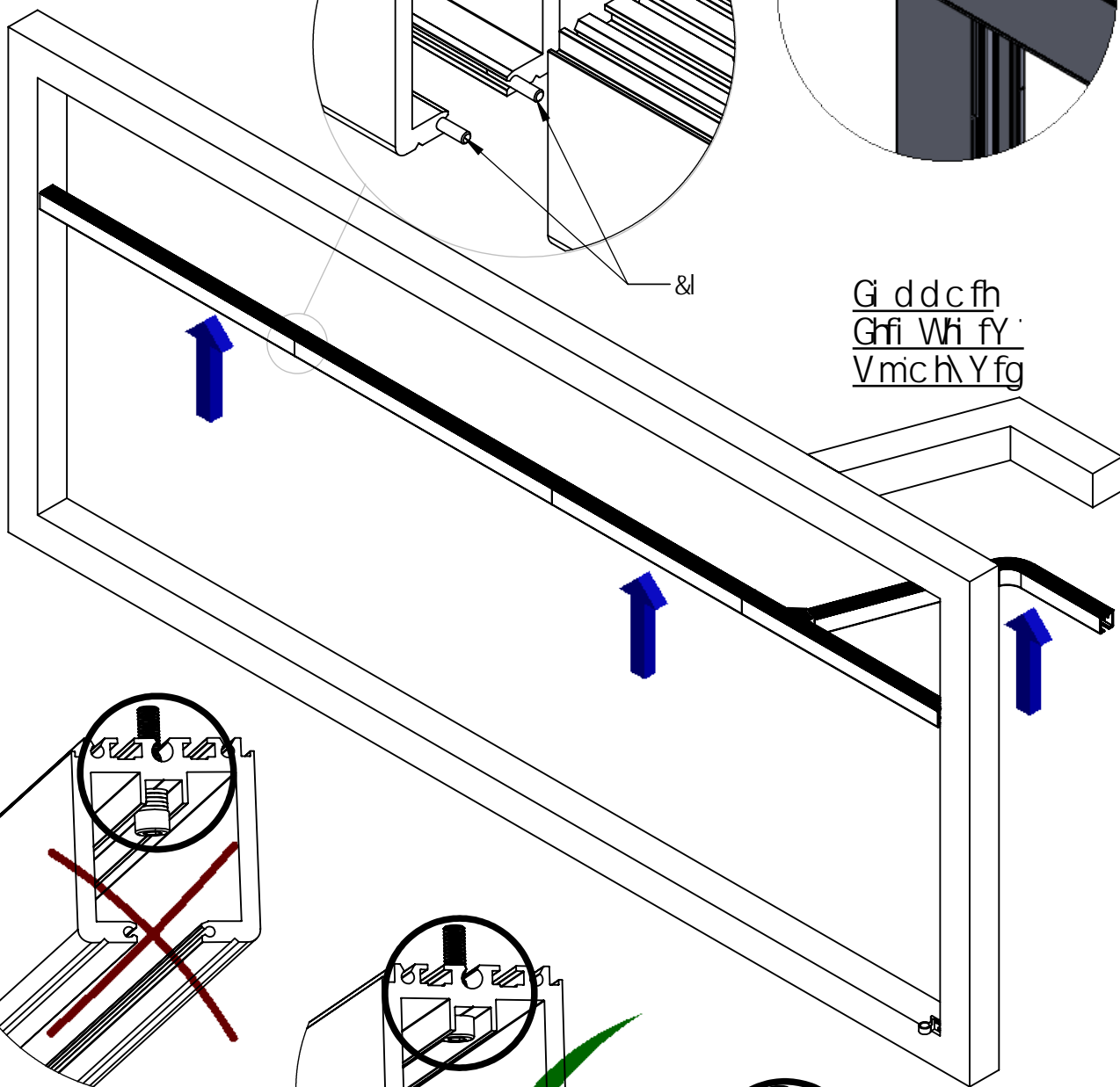


Ht d '7 cbbYWrcf'D]YW '
fG]XY '>Ua VgUbX '<YUX 'FUW_ 'E'

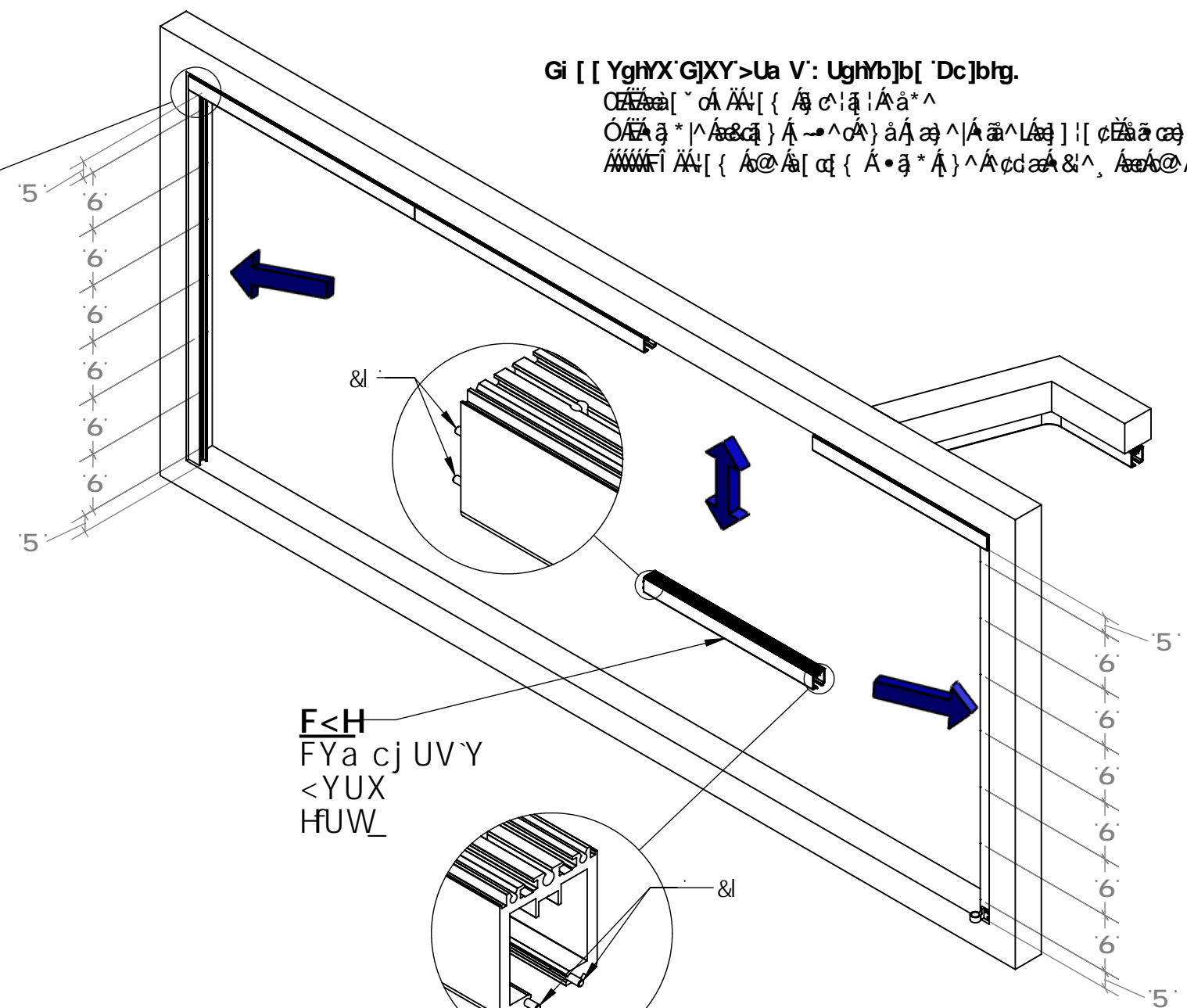
5ggYa V`mcZ<YUX`HfUW_



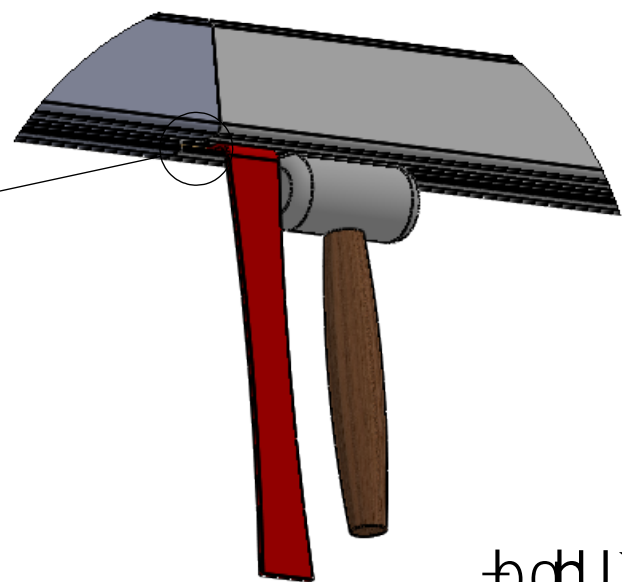
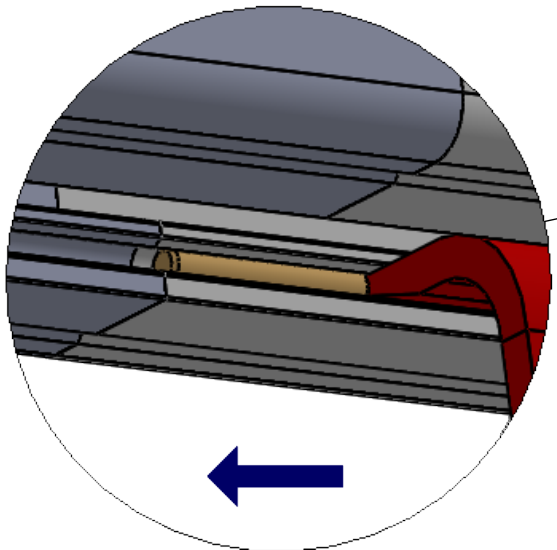
G ddcfh
Gfi Wfi fy
Vmc h\Yfg



Gi [[YghYX`GjXY>Ua V': UghYb]b[`Dc]bng.
OZaa[~ a AA[{ A c|a|Aa*^
ÓAa *|^A&cá } A ~^a) aA a^|A a^Aa } | cAa ca &^Aç^i`
ÁÁÁÁ ÁÁ[{ A@Á[c{ A·a* A } ^A cda &^, Áa@Á[c{

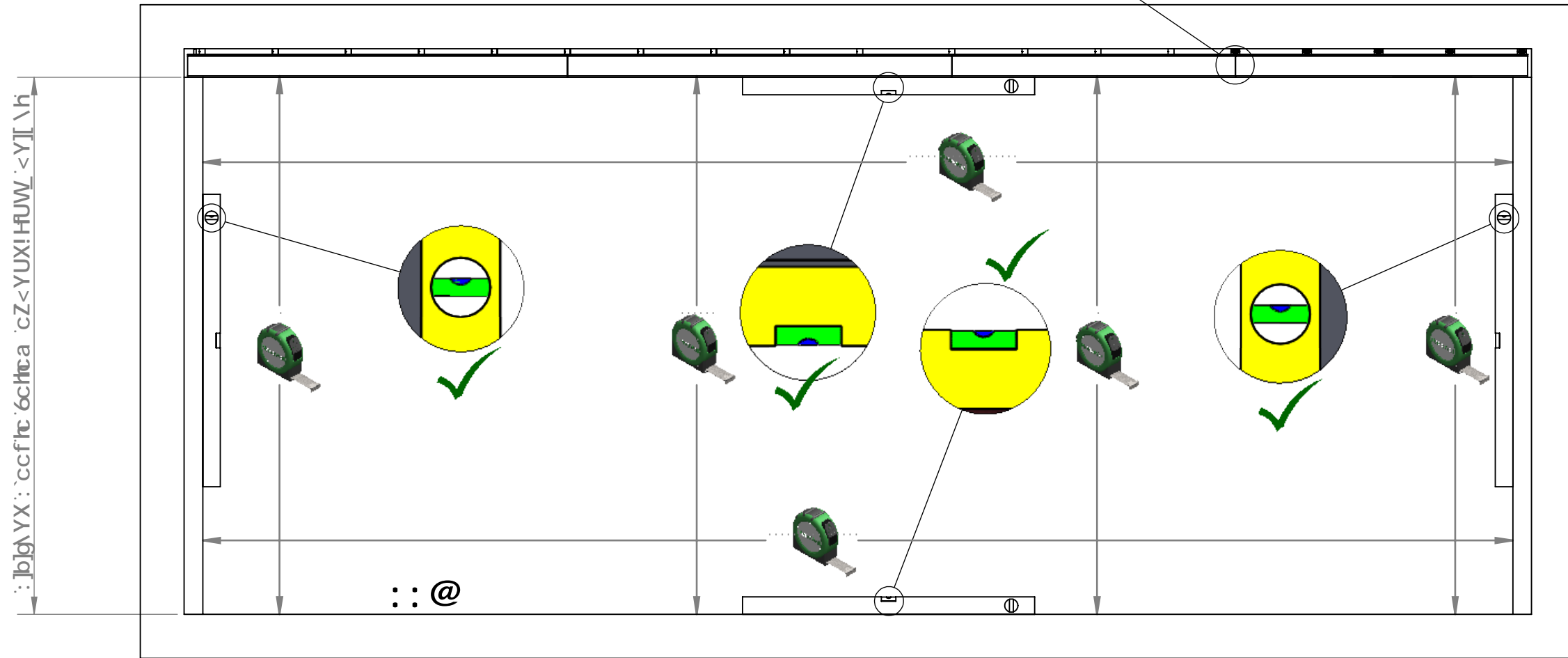
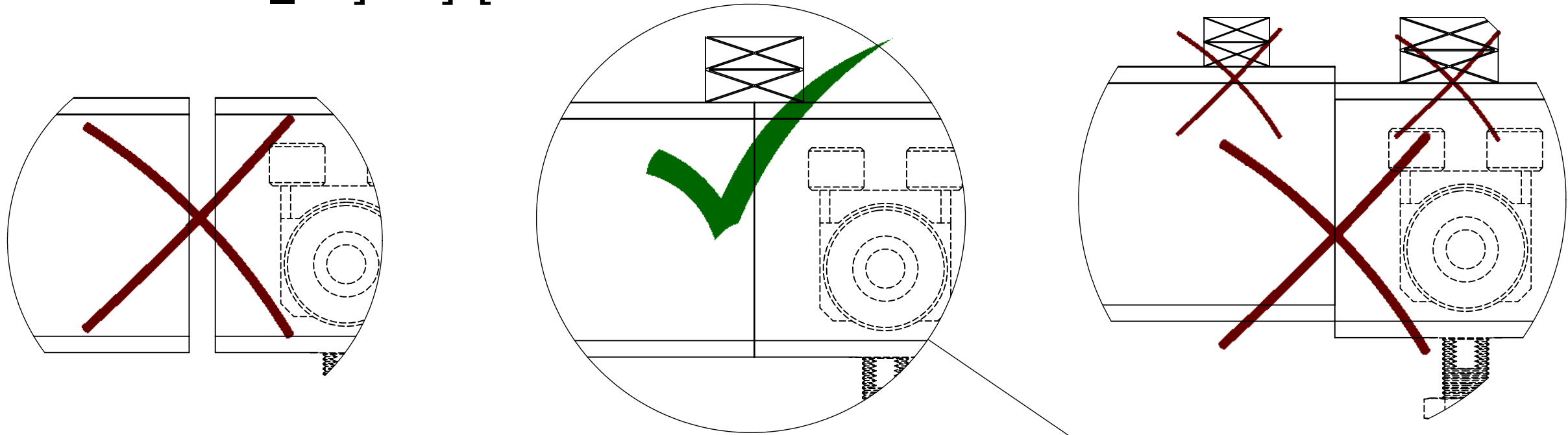


F<H
FYa cj UV`Y
<YUX
HfUW_



əghU`Uh]c b`A Ubi U`
Dfj UG99 G<99H) `C :`%

<YUX 'H U W \ G \] a a] b [



Installation of Floor Closer for Single Action Offset End Panel

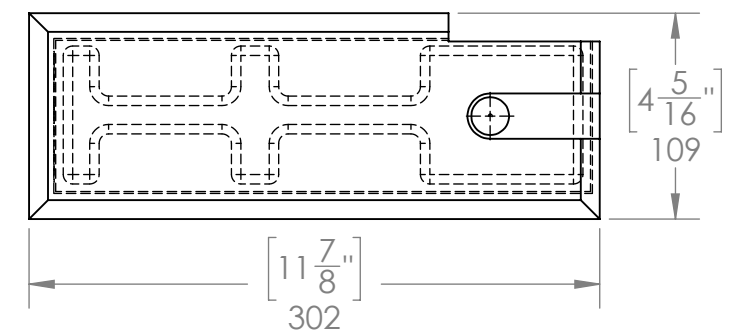
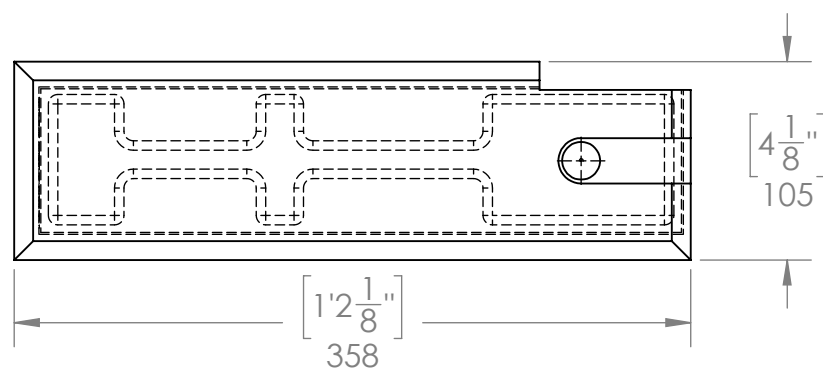
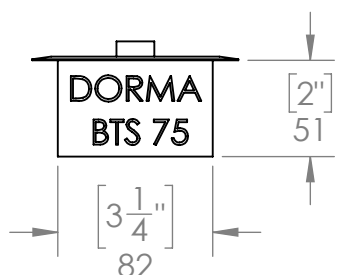
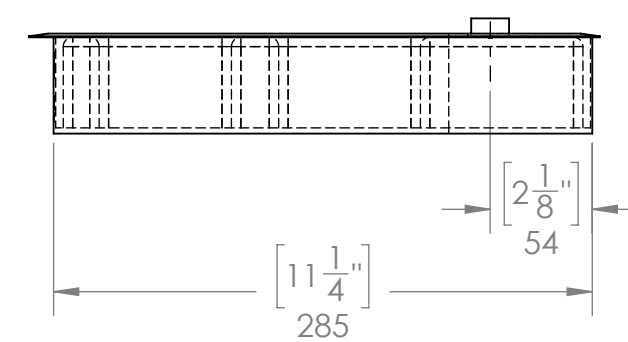
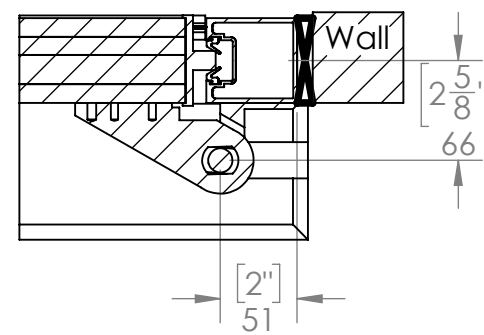
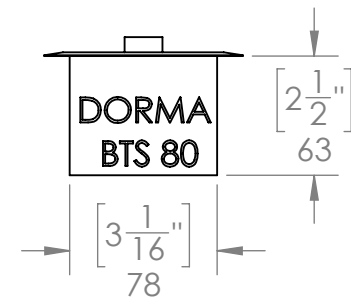
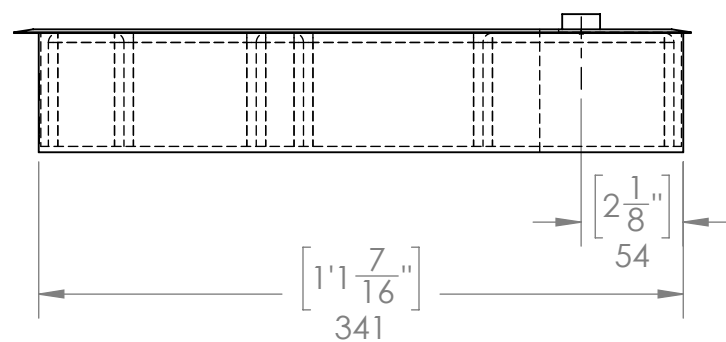
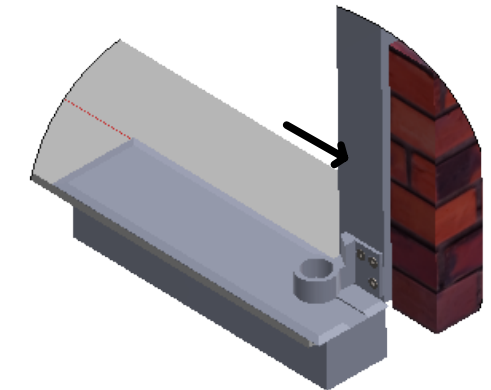
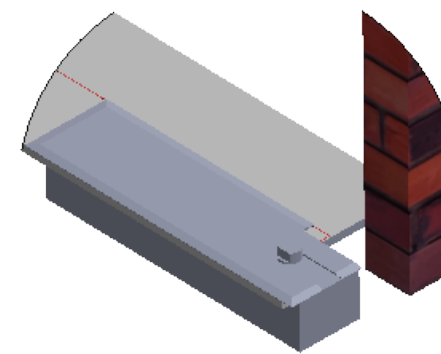
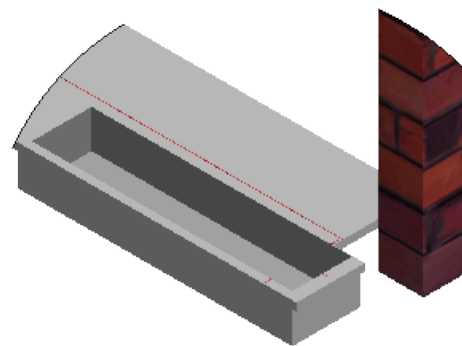
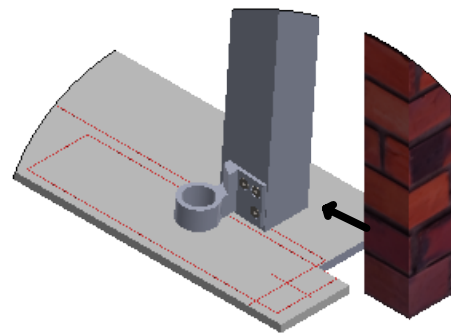
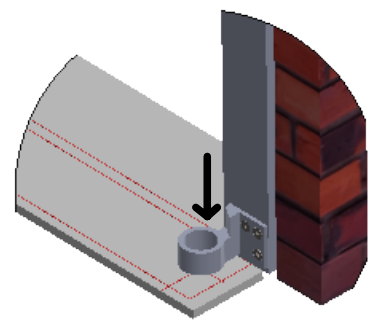
Step 1
Mark or measure
position for center point
of floor closer axle

Step 2
Take off side jamb

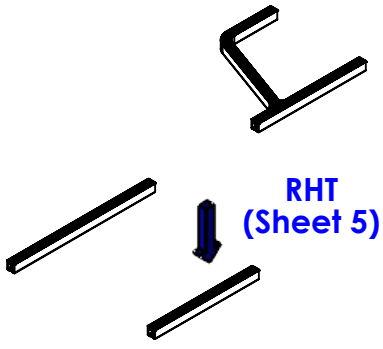
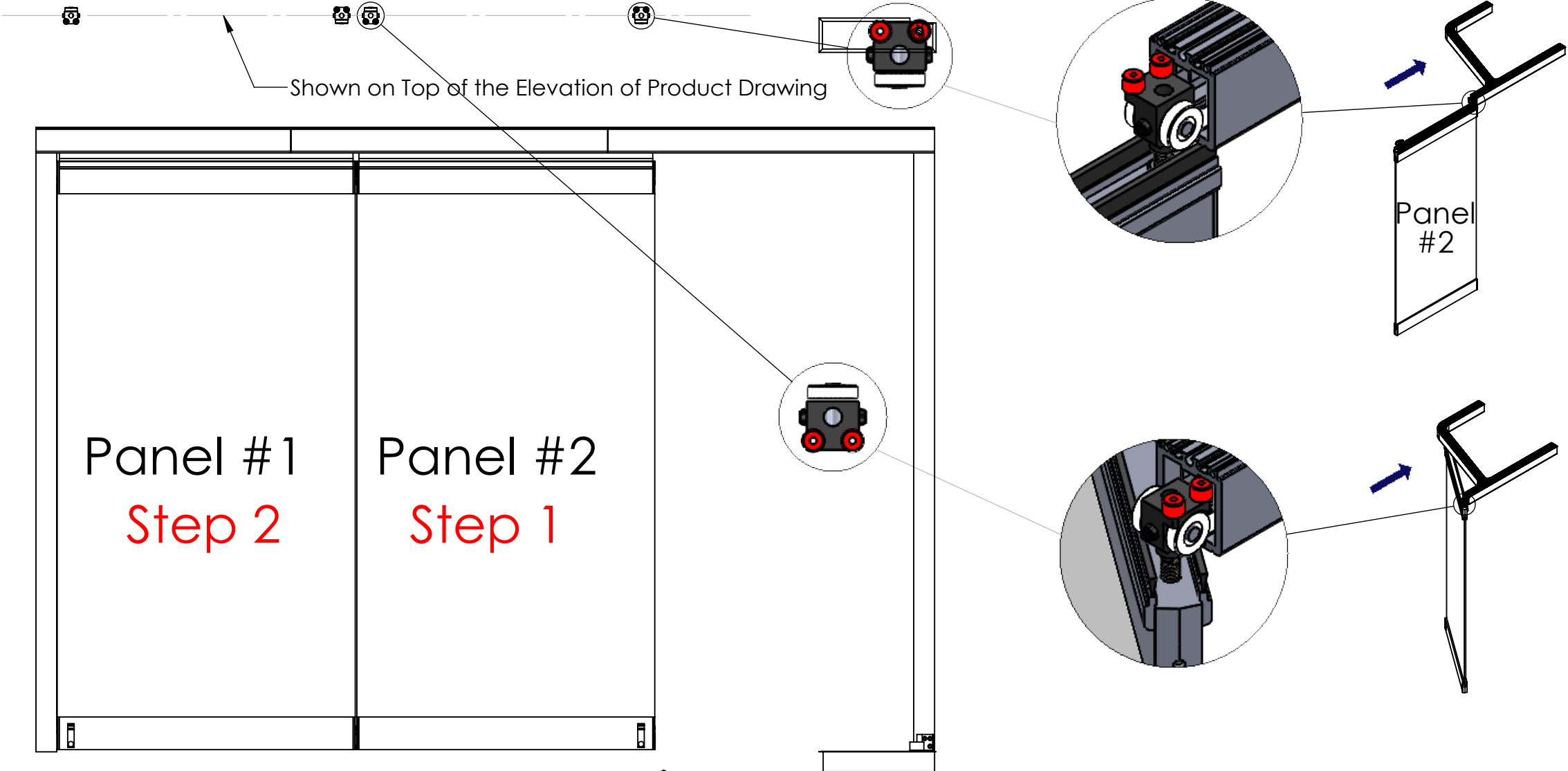
Step 3
Cut out hole
for floor closer

Step 4
Install floor closer and
fix it temporarily in place

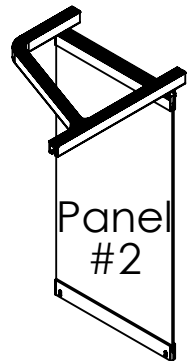
Step 5
Reinstall side jamb



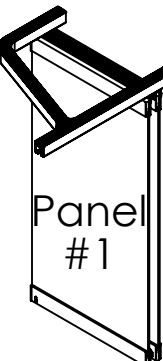
Installation Sequence of Panels



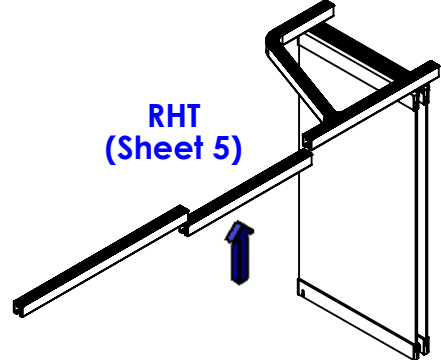
Step 0



Step 1



Step 2

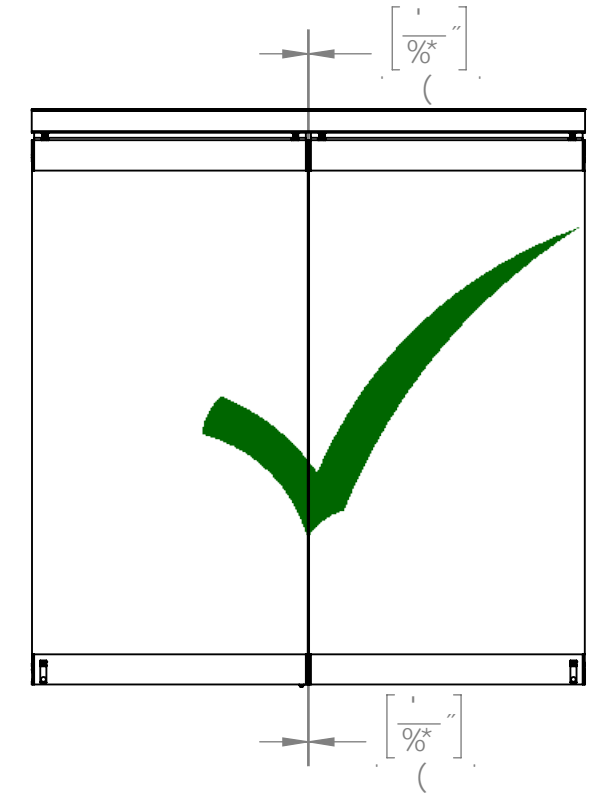
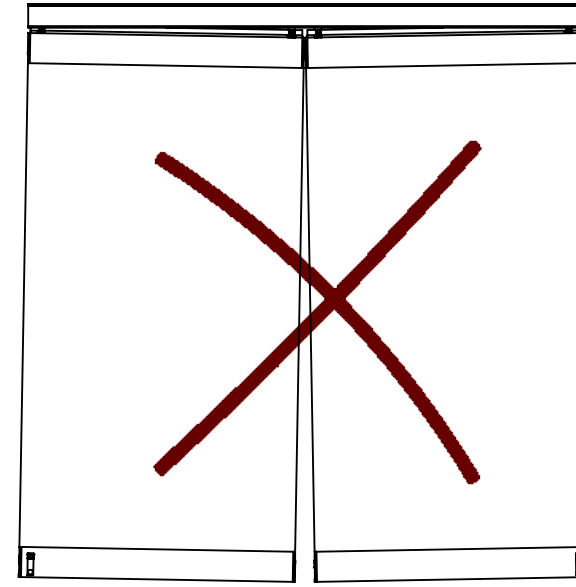
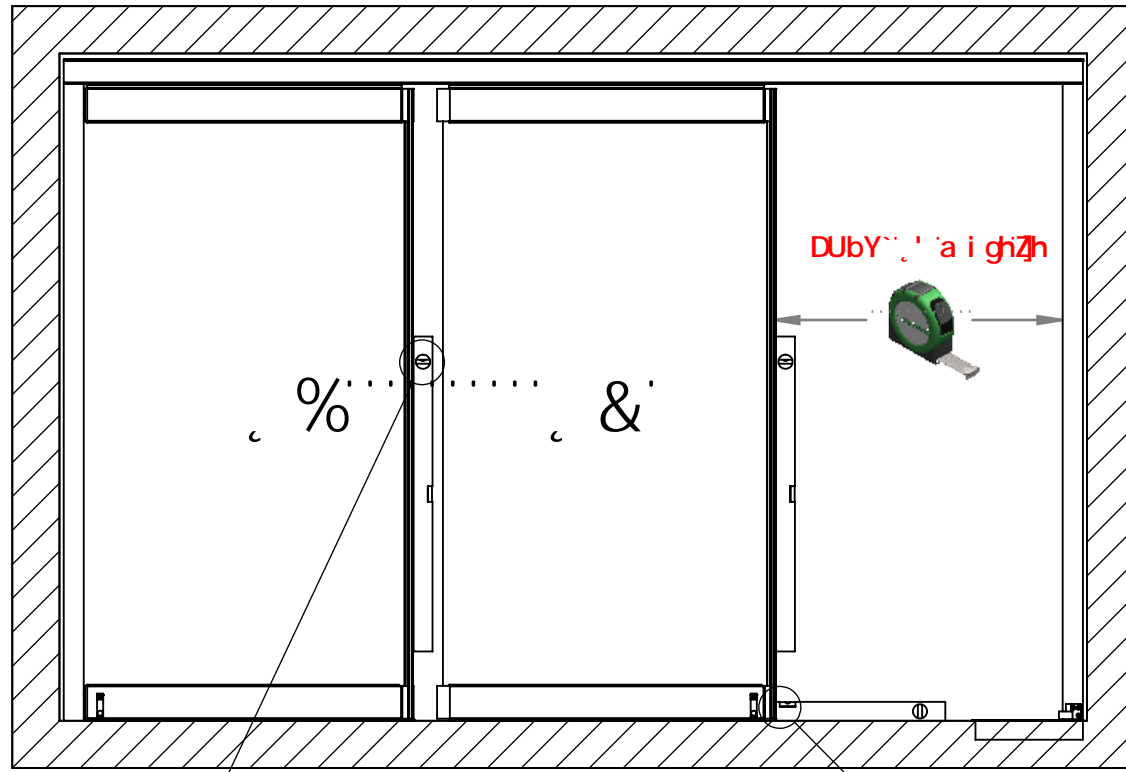


Step 3

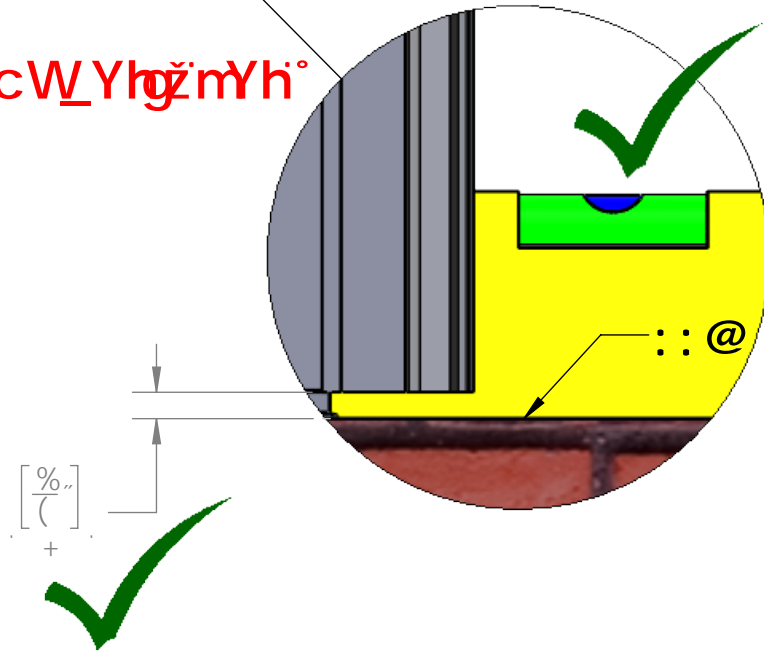
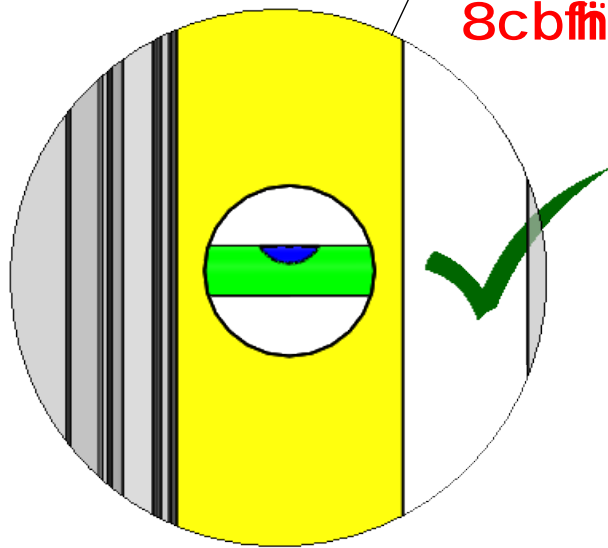
Rollers are supplied loose in the accessory box and need to be installed in the field
Attention:
 don't install set screw until roller is finally adjusted in height.

Panel Installation Sequence

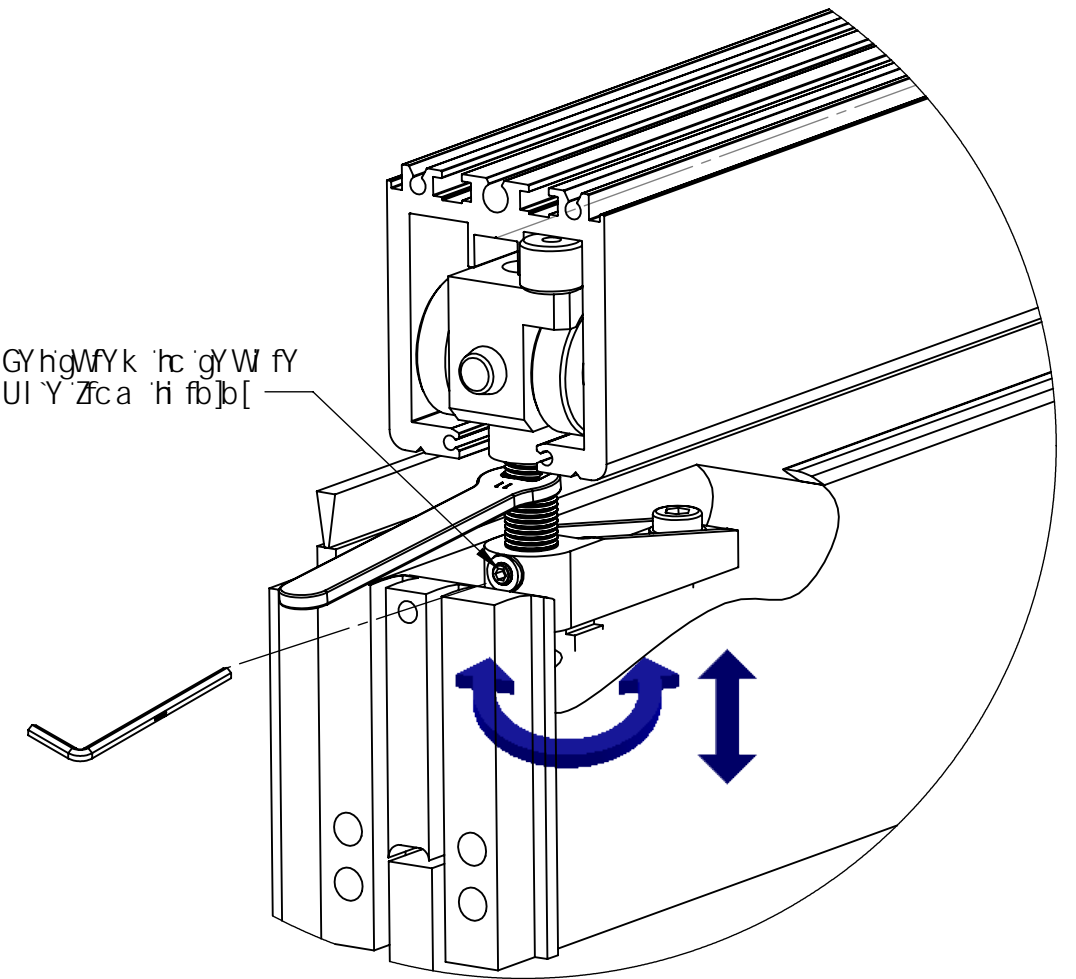
DUbY`5`][ba YbhUbX`<Y][\h5X↑ għa Ybh



8cbfñi8fj`<c`YgZcf`GcW_YhgzmYh`



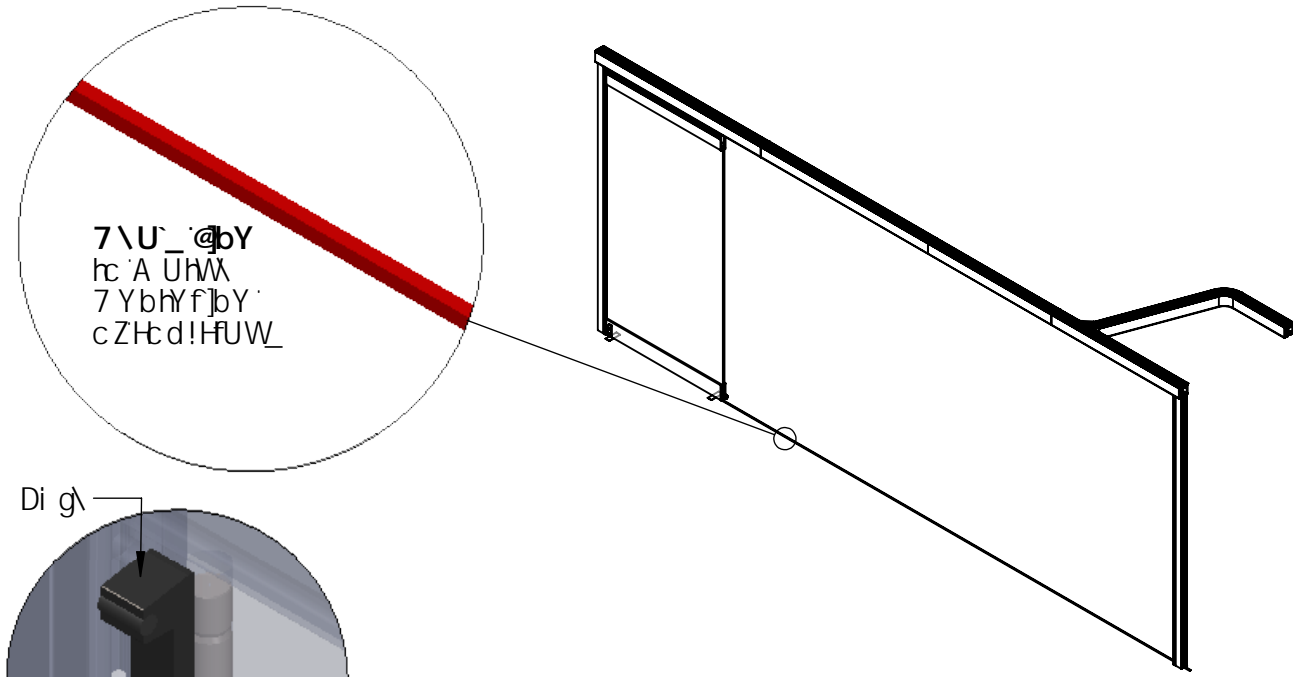
GYhgMYk`hc`gYW`fy`
UI`Y`Zfca`hi`fb]b[



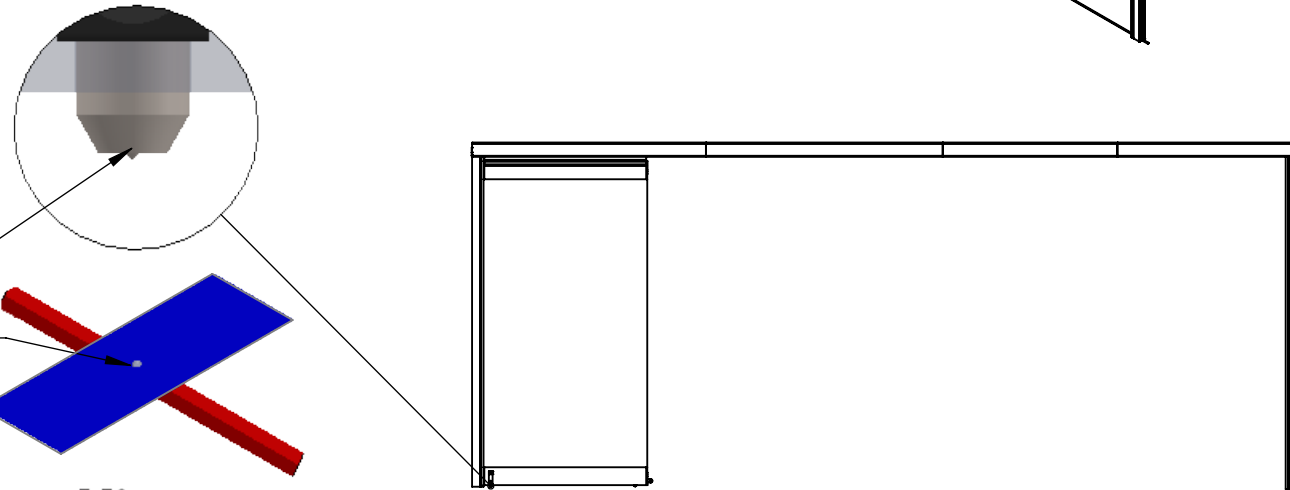
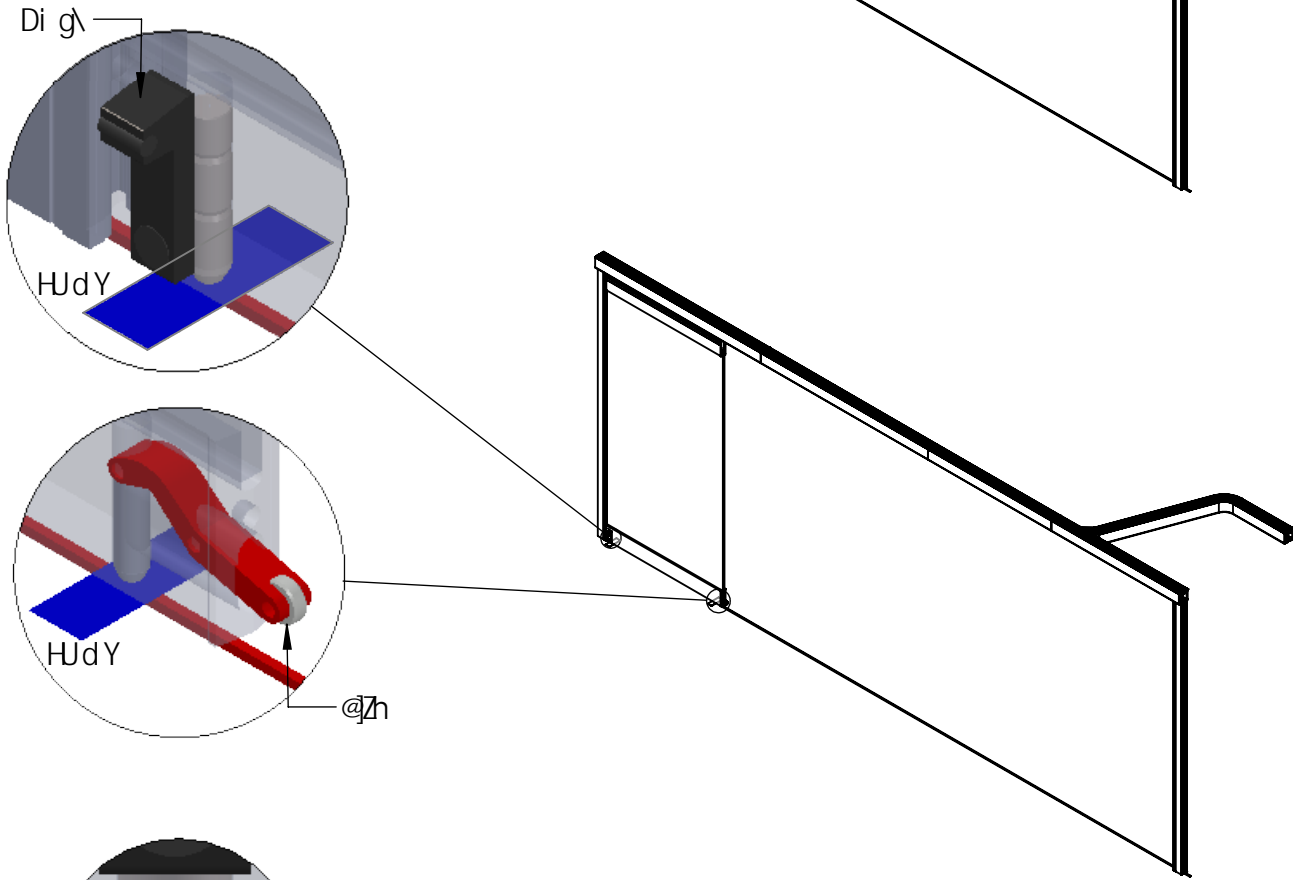
⊕għU`Uh]c b`A`Ubi`U`
Dfj`UG99` G<99H-`C`:%

8f]`b[`<c`YgZcf: `ccf`GcW_Yhg

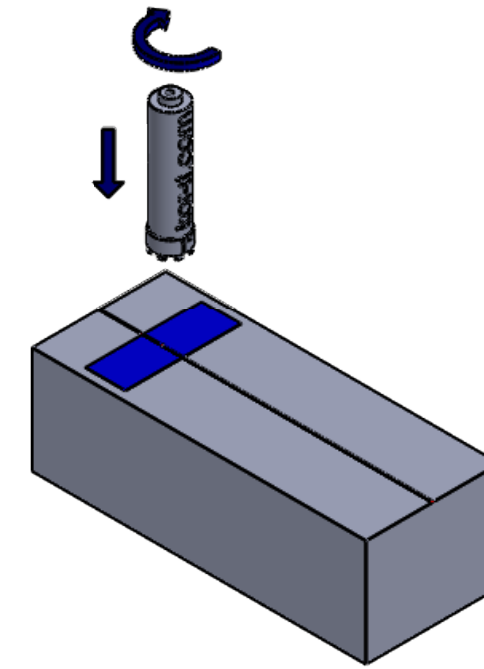
GhY d `%



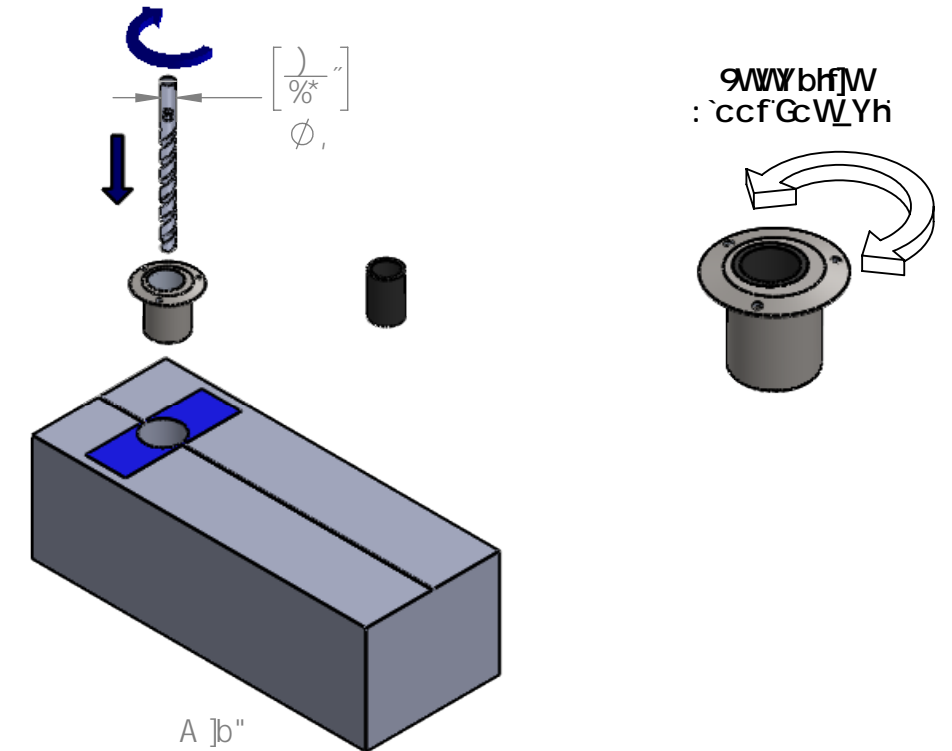
GhY d `&



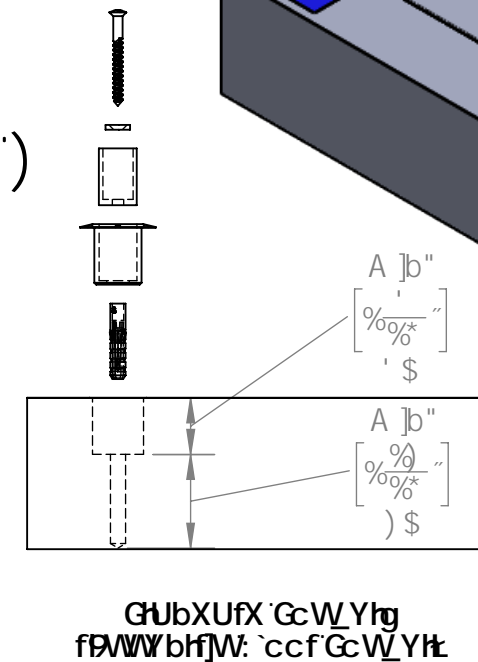
GhY d ``



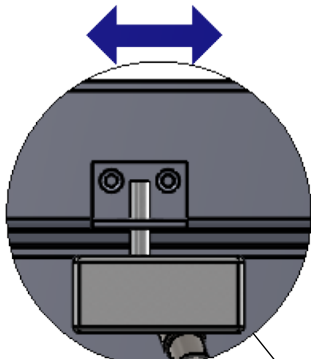
GhY d `(`



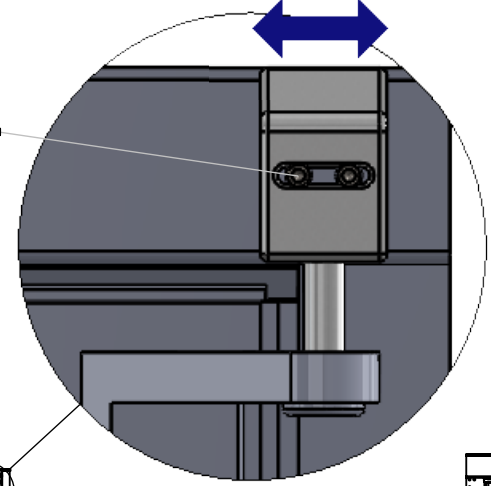
GhY d `)



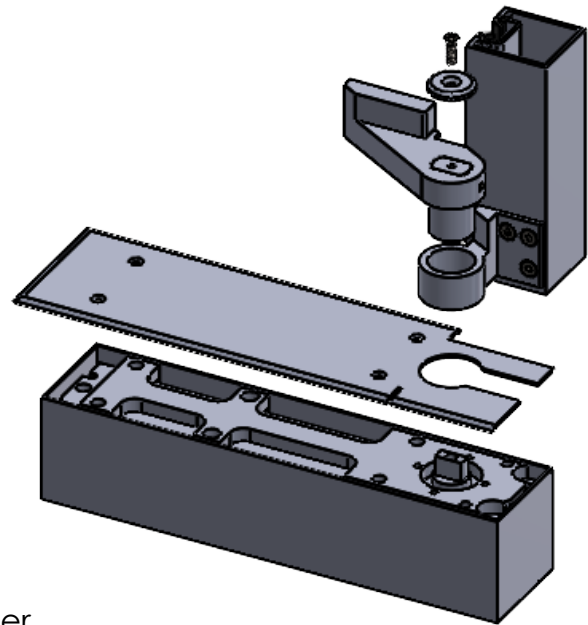
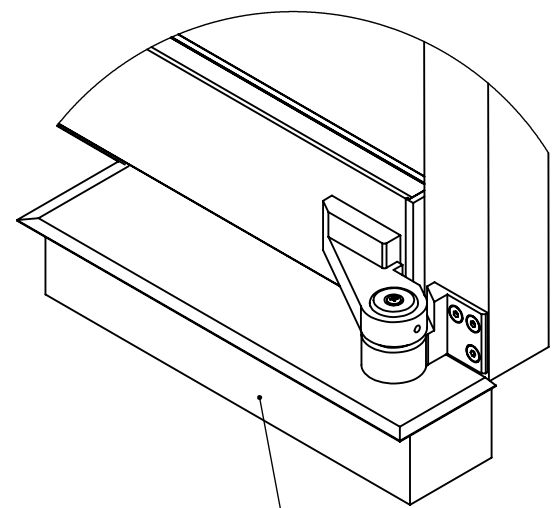
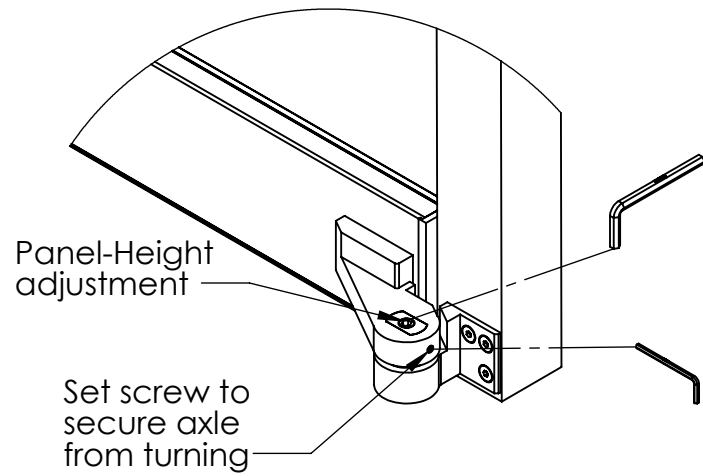
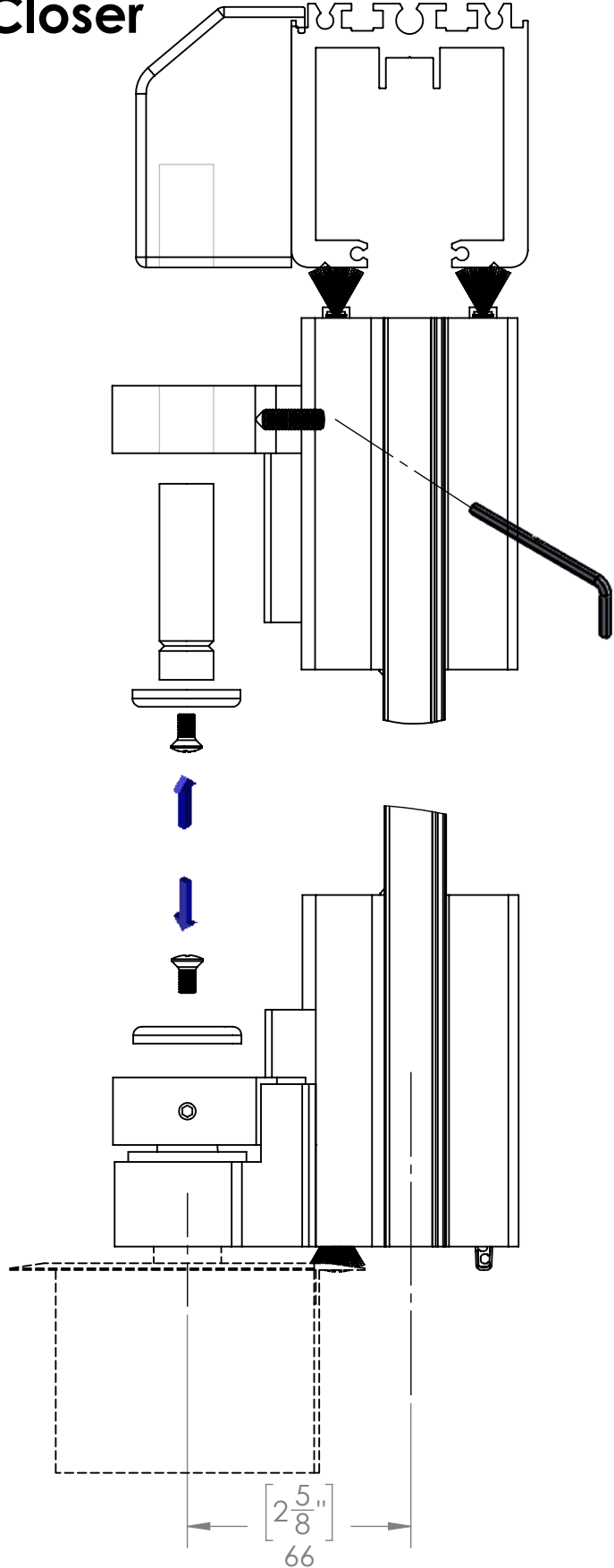
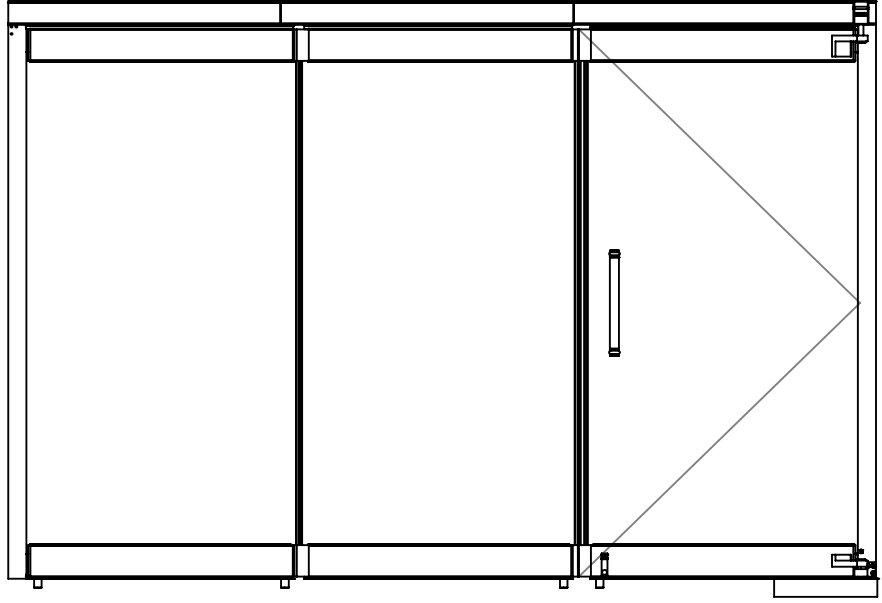
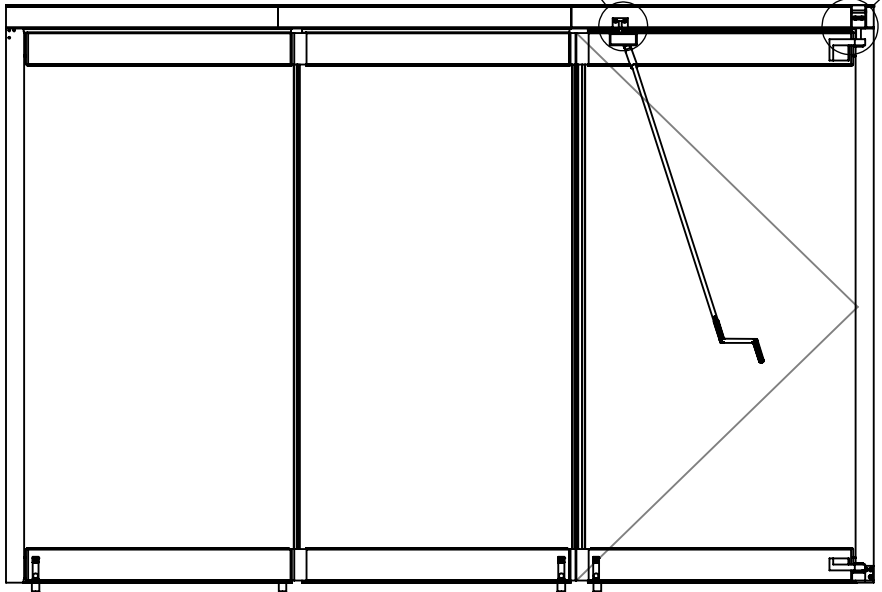
Panel Installation for non-entry Single Action Offset End Panel and Single Action Offset End Panel with Floor Closer



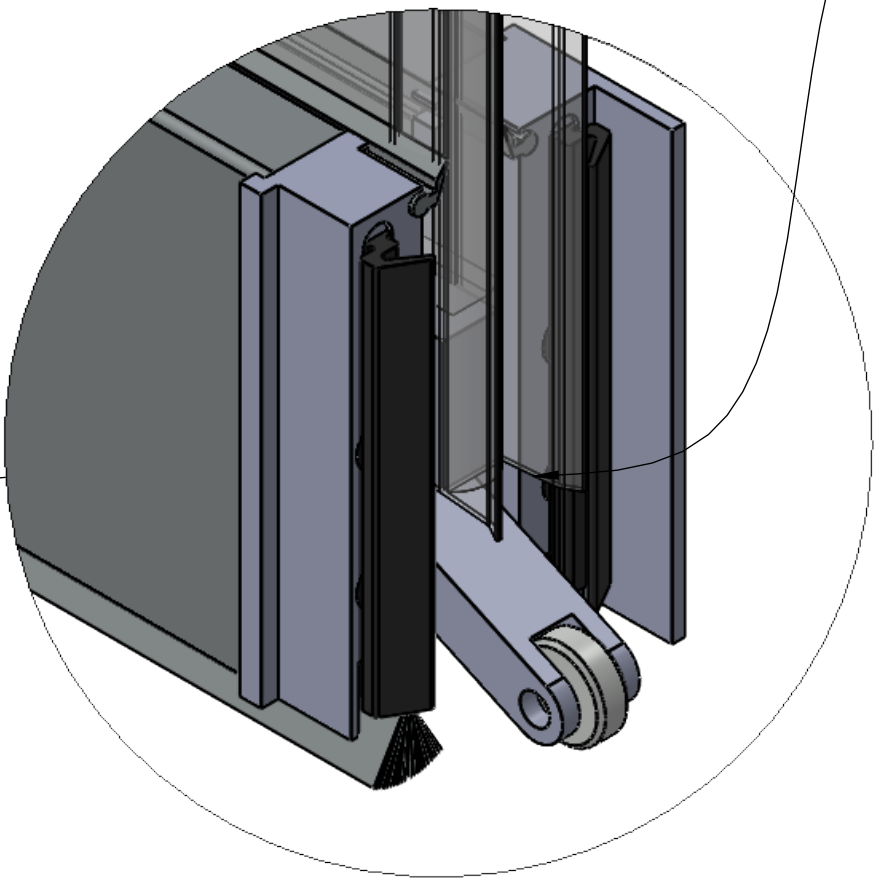
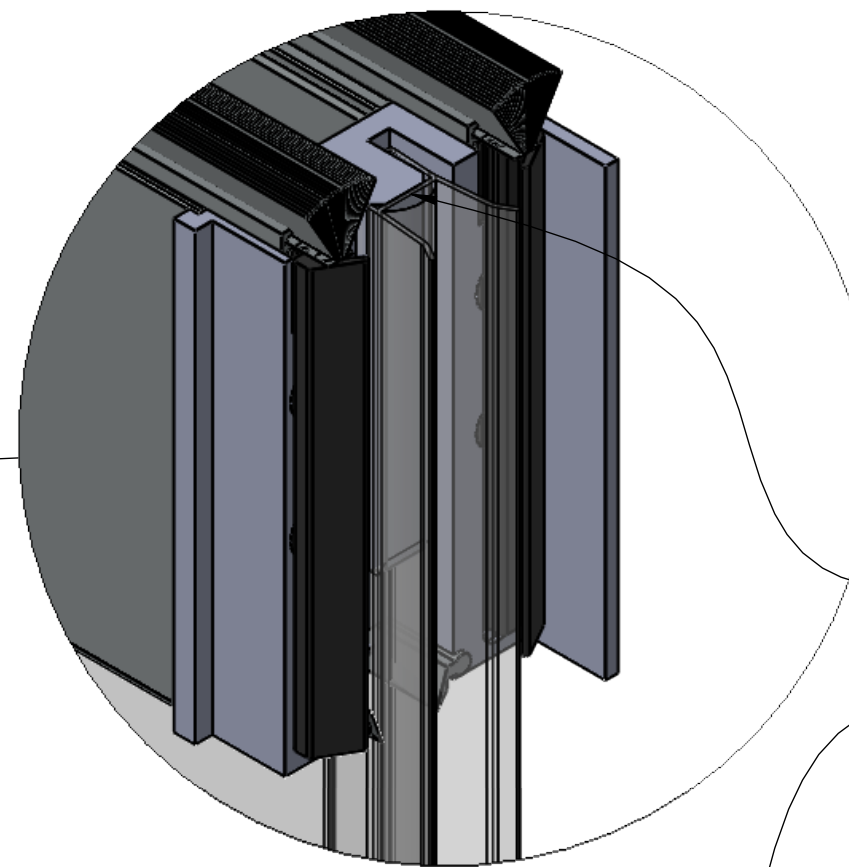
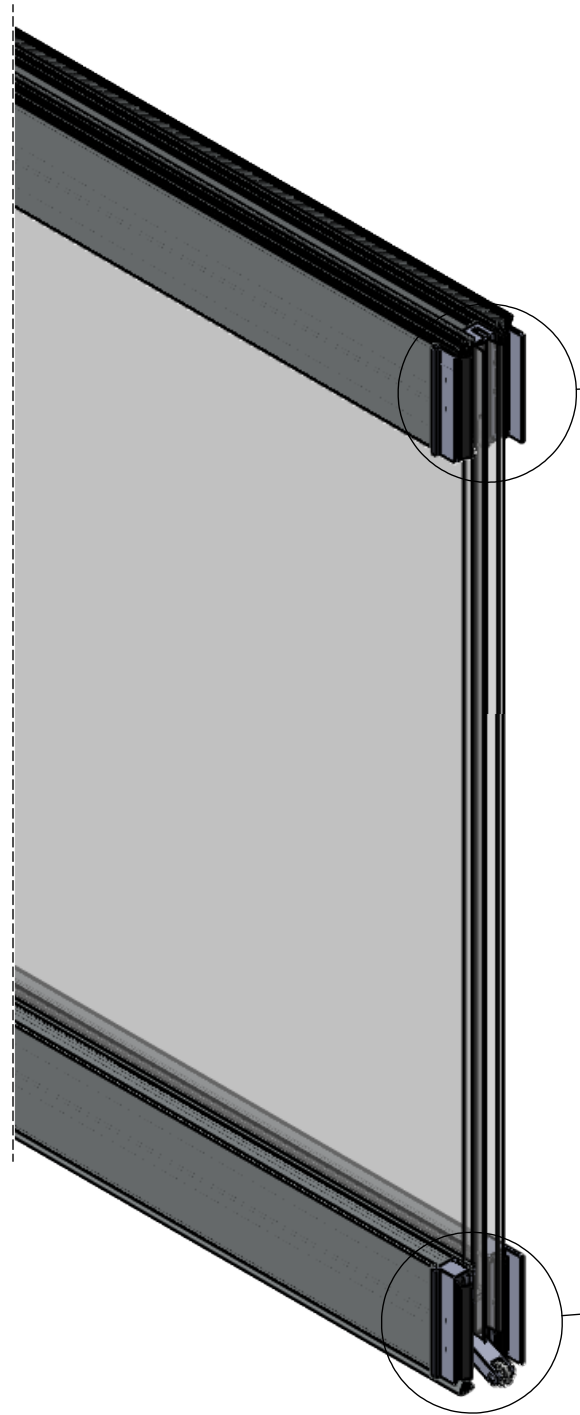
non-entry Single Action Offset End Panel



Single Action Offset End Panel with Floor Closer

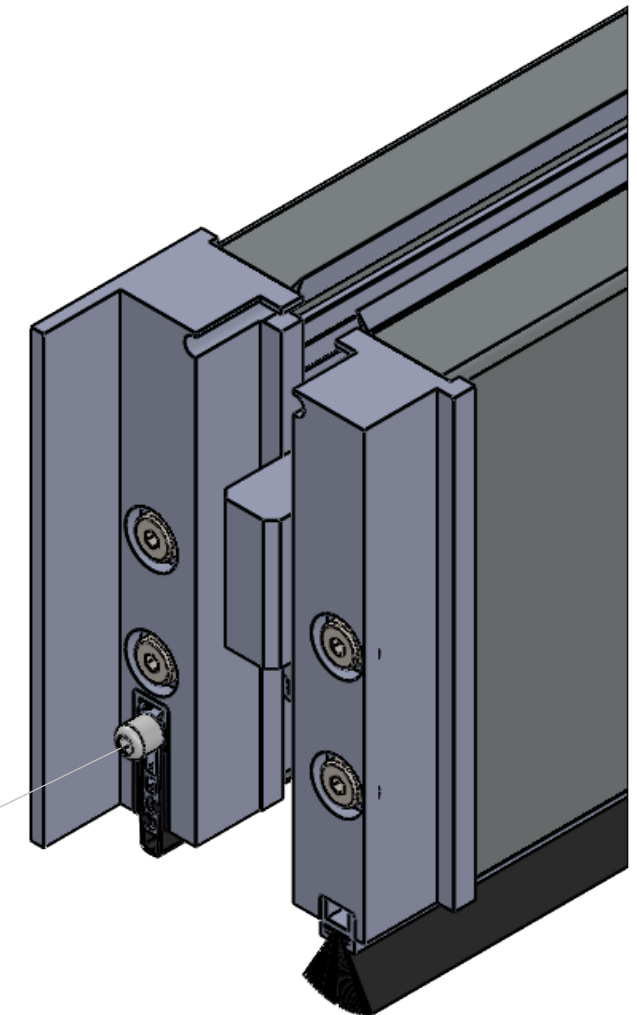


:]Y`X`5dd`m]b[`J Yfh]WU`<![`UbX` \![Ug_Yhg]UbX`<Y][\h5X↑ gra YbhcZ6chca `7 ca dfYgg]cb`GYU`



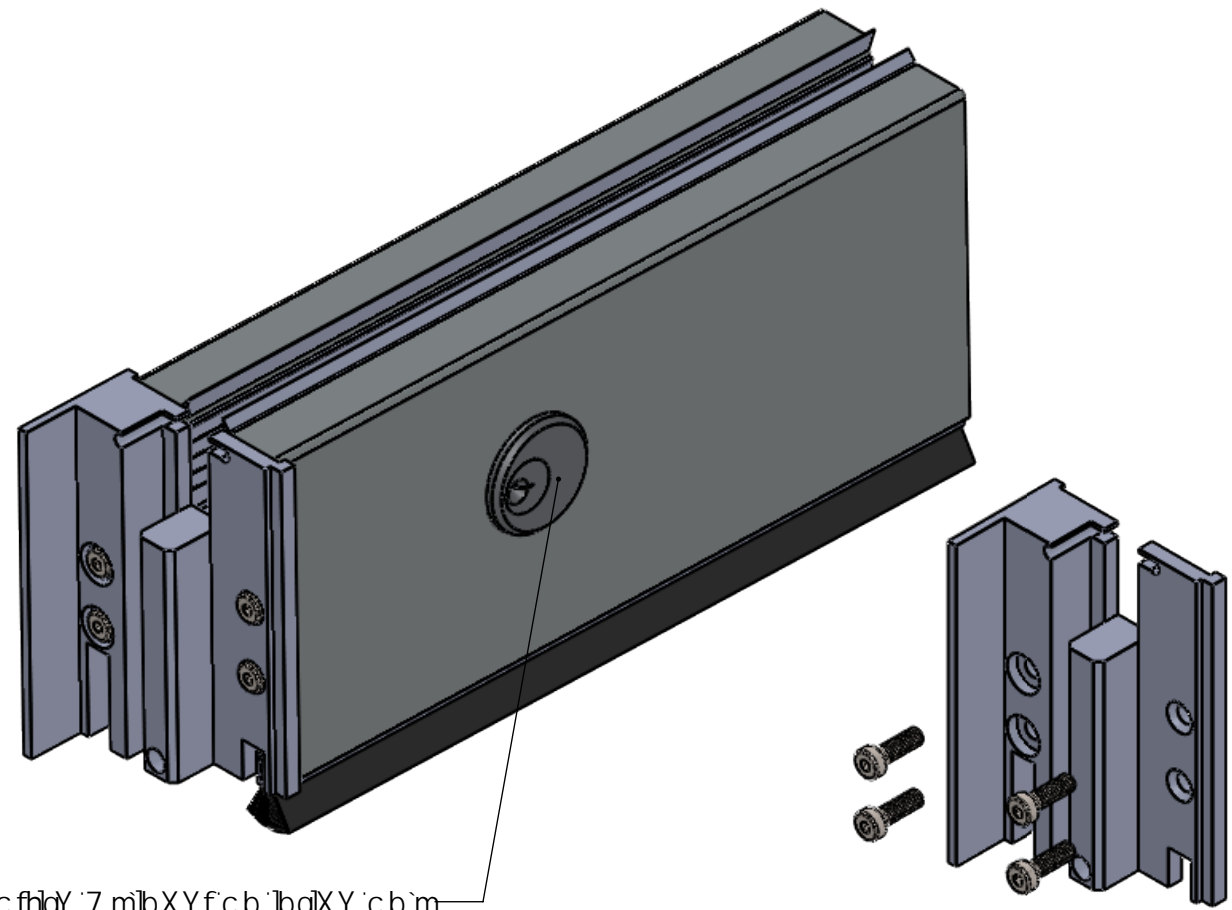
D'YUgy `W` h'hc `g]hY` h`Y`j` Yfh]WU`
 WYUf[Ug_Yhg]b`h`Y`Z]Y`X`/
 hcd`g\ci`X` `]bY`i`d`k`]h`h`Y`
 hcd`YX[Y`cZ]h`Y`YbX`Wc]Yf`
 Vchca`g\ci`X` `]bY`i`d`k`]h`h`Y`
 W`hZcf`h`Y`Ui`hca`UhYX`]bhYfcW`"
 ...<![Ug_Yhif]VYhk`YYb`g]X]b[`dUbY`g`
 ...UbX`
 ...\![Ug_Yhif]b`h`Y`g]XY`cZ]h`Y`g]X]b[`.
 ...dUbY`a`YYh]b[`h`Y`g]b[`Y`UWh]cb`
 ...YbX`dUbY`k`]h`c`ZgYh`\]b[Yk`

<Y][\h5X↑ gra YbhcZ
 6chca `7 ca dfYgg]cb`GYU`

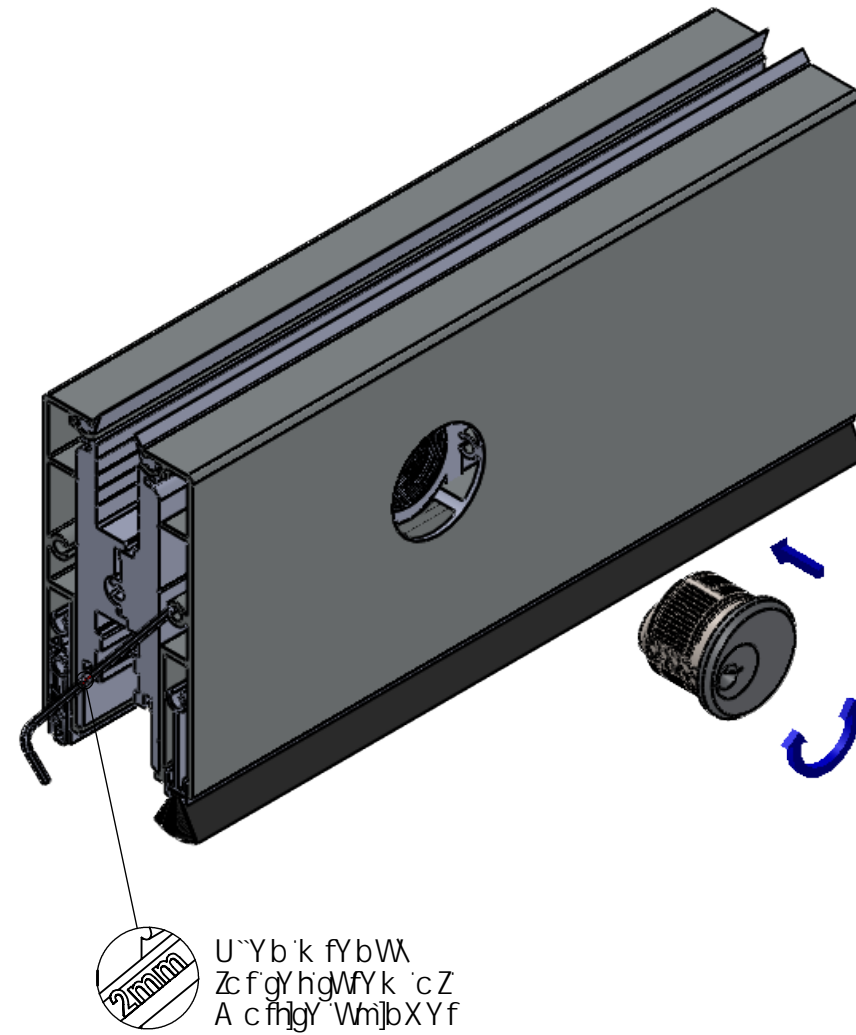


hghU`Uh]cb`A`Ubi`U`
 Df] UG99 G<99H%&C`:%`

U`Uh]cb`cZA cfhgY`7 m]bXYf`fb`bg]XY`cb`m



A cfhgY`7 m]bXYf`cb`bg]XY`cb`m



U`Yb`k`fYbW`
Zcf`gY`hgWfYk`cZ`
A cfhgY`Wm]bXYf`