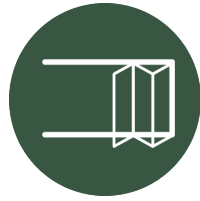




# COMMERCIAL OPENING GLASS WALLS



**NanaWall**<sup>®</sup>  
Boundaries **Unbound**<sup>™</sup>



# FOLDING GLASS WALLS



NanaWall Folding Glass Walls offer clean lined aesthetics with narrow profiles. Easy operation—no matter the size or number of panels.

Available in three different material choices:



To request a Folding Systems brochure, please visit [nanawall.com/brochure](http://nanawall.com/brochure)



**Increased Transparency:** Clean aesthetics with the slimmest profiles available and minimal exposed hardware.



**Flexible Stacking:** Floating panel sets can stack to the left or right with panels inward or outward opening.



**Uninterrupted Transitions:** Only ADA-compliant sill with a water rating and a high heel resistant feature.



**Taller Heights:** Floor supported panels capable of heights up to 11' 6"



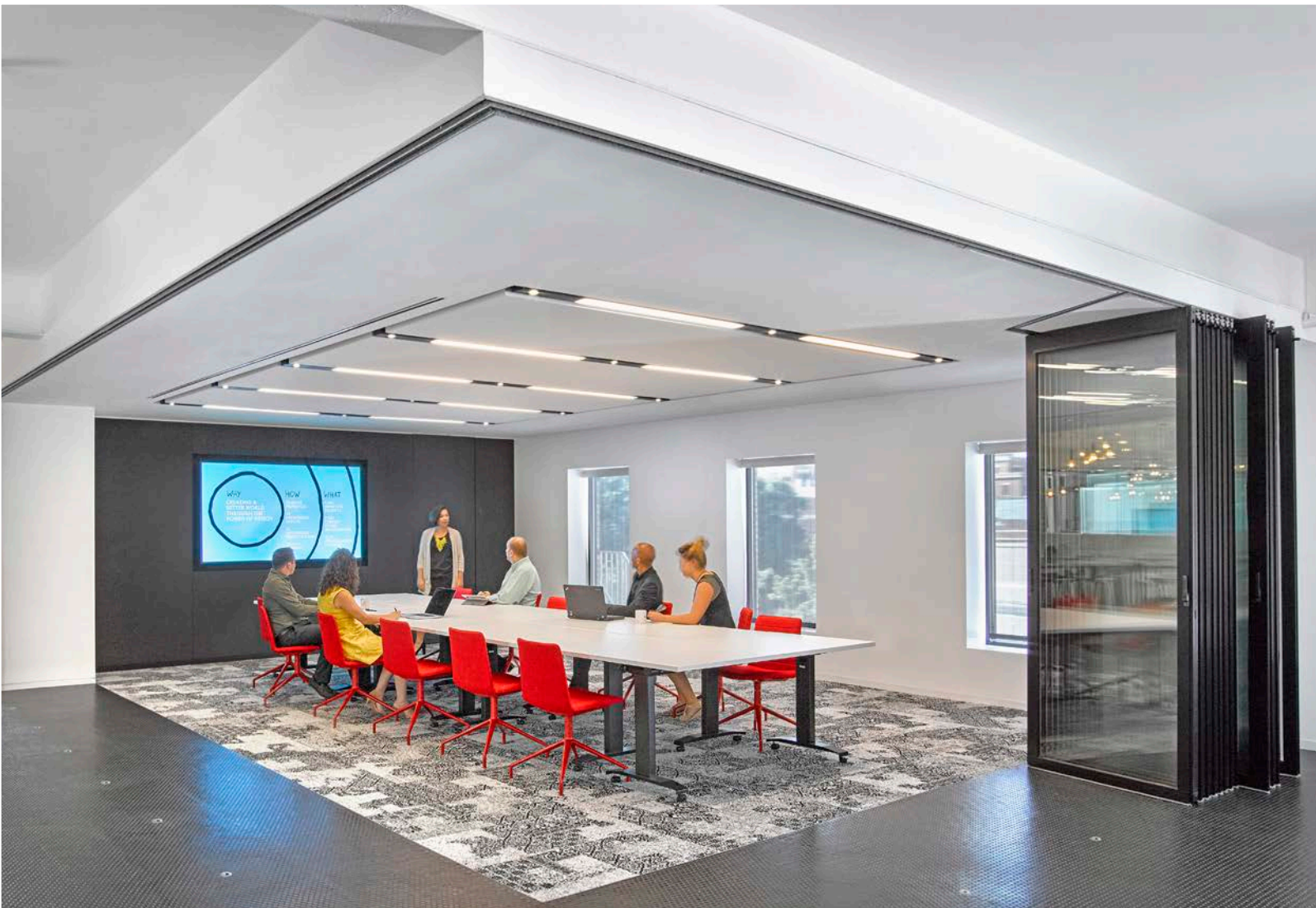
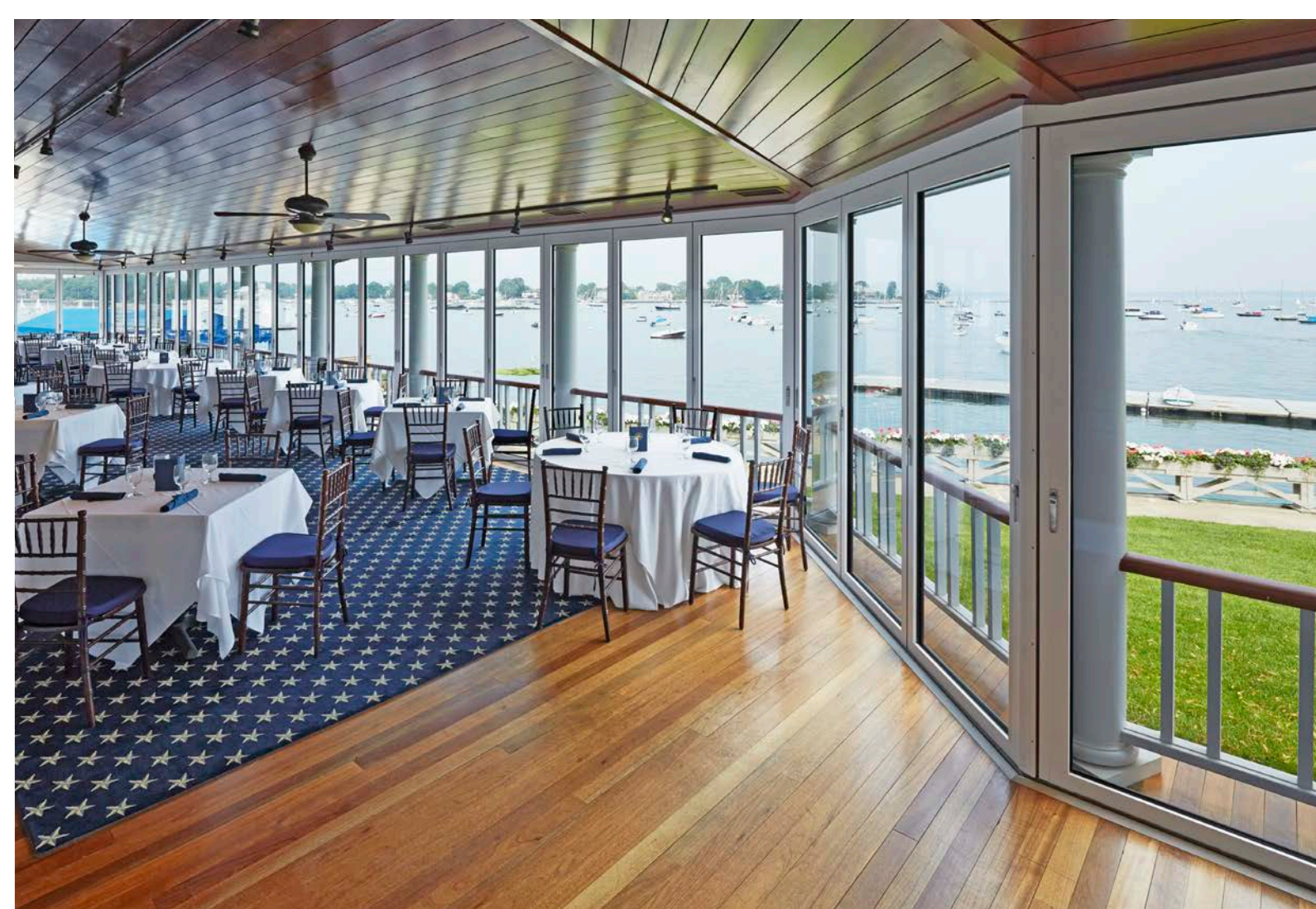
**Acoustical Privacy:** Range of unit STC options from STC 30 up to STC 45.



**Proven Durability:** Air, water, structural, and forced entry tested. Swing door tested to 500,000 and bi-fold panels to 20,000 open/close cycles.

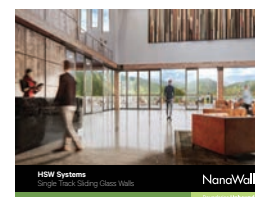


# INDIVIDUAL PANEL SLIDING GLASS WALLS



NanaWall HSW systems offer transformative design flexibility. With limitless spans of individual panels that ride within a single head track over a single floor track—or no floor track at all.

Available in two different material choices:



To request an HSW Systems brochure, please visit [nanawall.com/brochure](http://nanawall.com/brochure)



**Unlimited Widths:** Extremely large openings are possible with unlimited spans of individual panels.



**Any Shape Flexibility:** Virtually any shape is possible, including open corners and segmented curves.



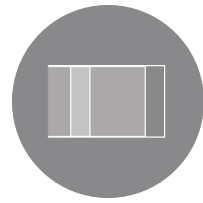
**Remote Panel Stacking:** Customizable stacking bay options allows panels to be parked remotely or hidden in closets.



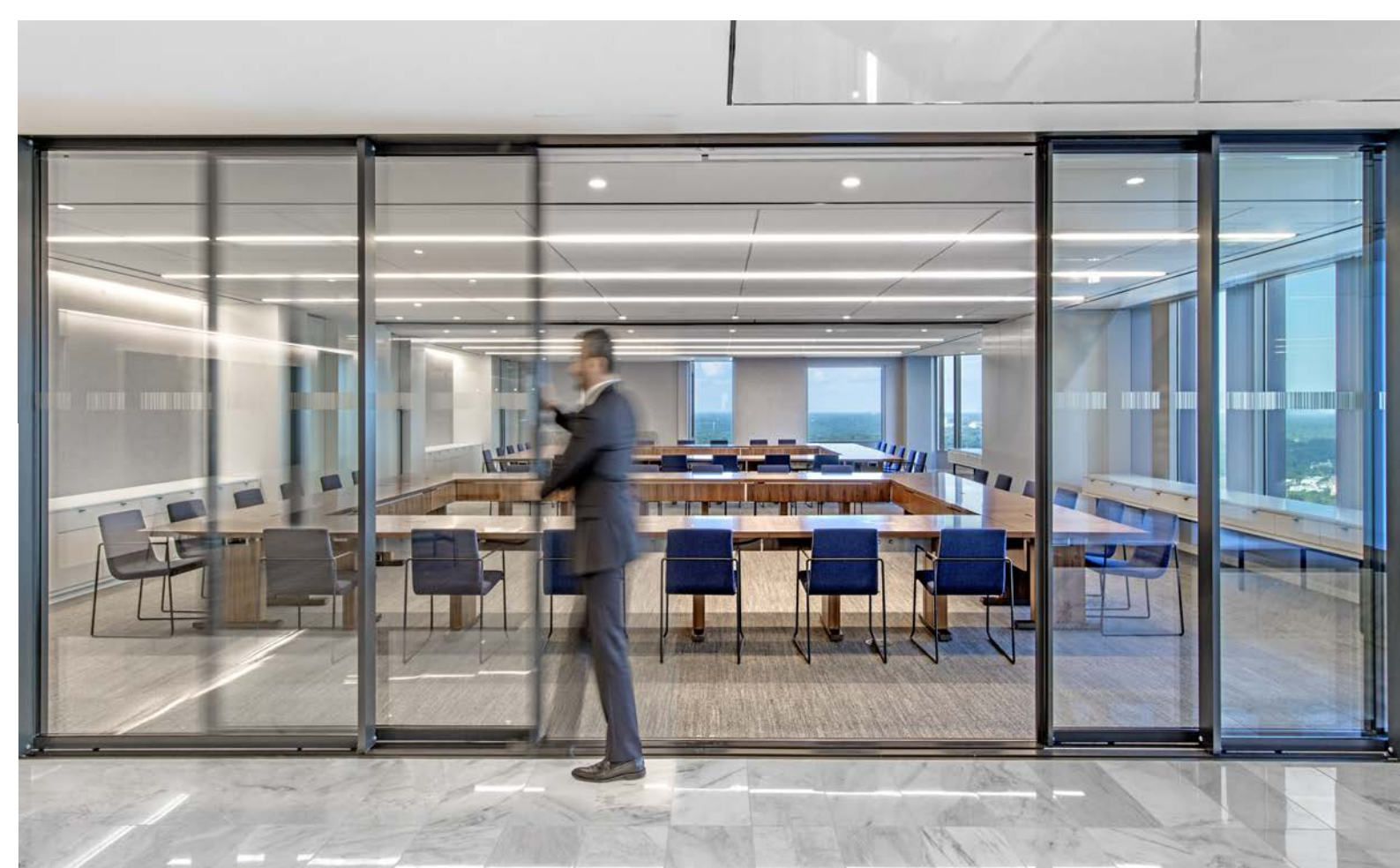
**Swing Doors that Slide Away:** HSW60 System allows swing doors to be placed anywhere in the panel span.



**Clean Transitions:** Single floor track (or no floor track) offers cleaner lines and smoother transitions.



# MINIMAL LARGE PANEL SLIDING GLASS WALLS



Cero offers the largest panes of glass from NanaWall, producing clean, uniform, and ultra-thin lines for maximum light filled spaces that connect the interior to the exterior.



Available in Aluminum profiles only.



To request a Cero brochure, please visit [nanawall.com/brochure](http://nanawall.com/brochure)



### **Narrow Stiles and Rails—Symmetrical Picture Frame Effect:**

Panel rails and stiles are uniform with a consistent 1 5/16" (34 mm) top to bottom, achieving a symmetrical and minimal design.



**A Floor to Ceiling Lens to the Outside:** Full floor to ceiling sliding glass panels with recessed top and bottom tracks.



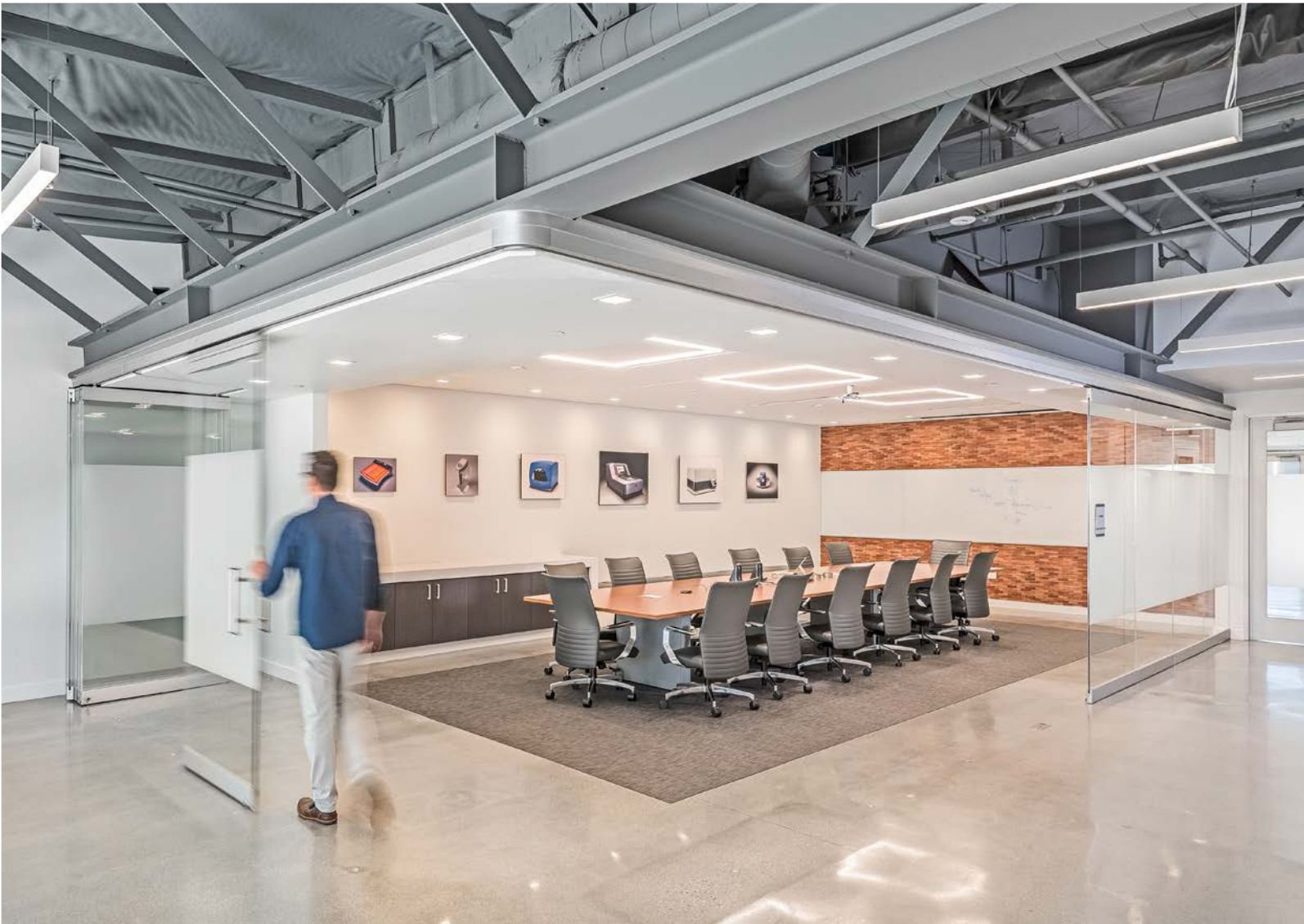
**Aesthetically Disappearing Floor Track:** Flush Sill option is available for sheltered or interior environments creating aesthetically seamless transitions between spaces. Four sill options are available.



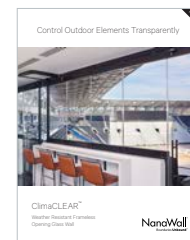
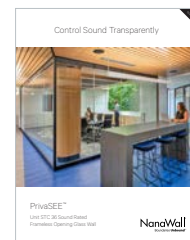
**Multipoint Tamper-Resistant System:** Security is provided with multipoint locking and a flat handle that is integrated into the vertical profile stile to maintain the clean, minimal appearance.



# FRAMELESS GLASS WALLS



Frameless all glass product line consists of single track sliding, sliding pivot, folding, and center pivot systems.



To request a PrivaSEE or ClimaCLEAR brochure, please visit [nanawall.com/brochure](http://nanawall.com/brochure)



**Coordinating Systems:** HSW75, FSW75, and CSW75 can be mixed and matched to create solutions for unique design challenges.



**No Vertical Profiles:** All glass panels with narrow top and bottom rail heights.



**Single Track Operation, Sill or No Sill:** Product family offers solutions for sill or no sill configurations.



**Large Panel Sizes:** Panels are available to 4' (1220 mm) wide and 10' 6" (3230 mm) in height (please contact NanaWall for larger options).

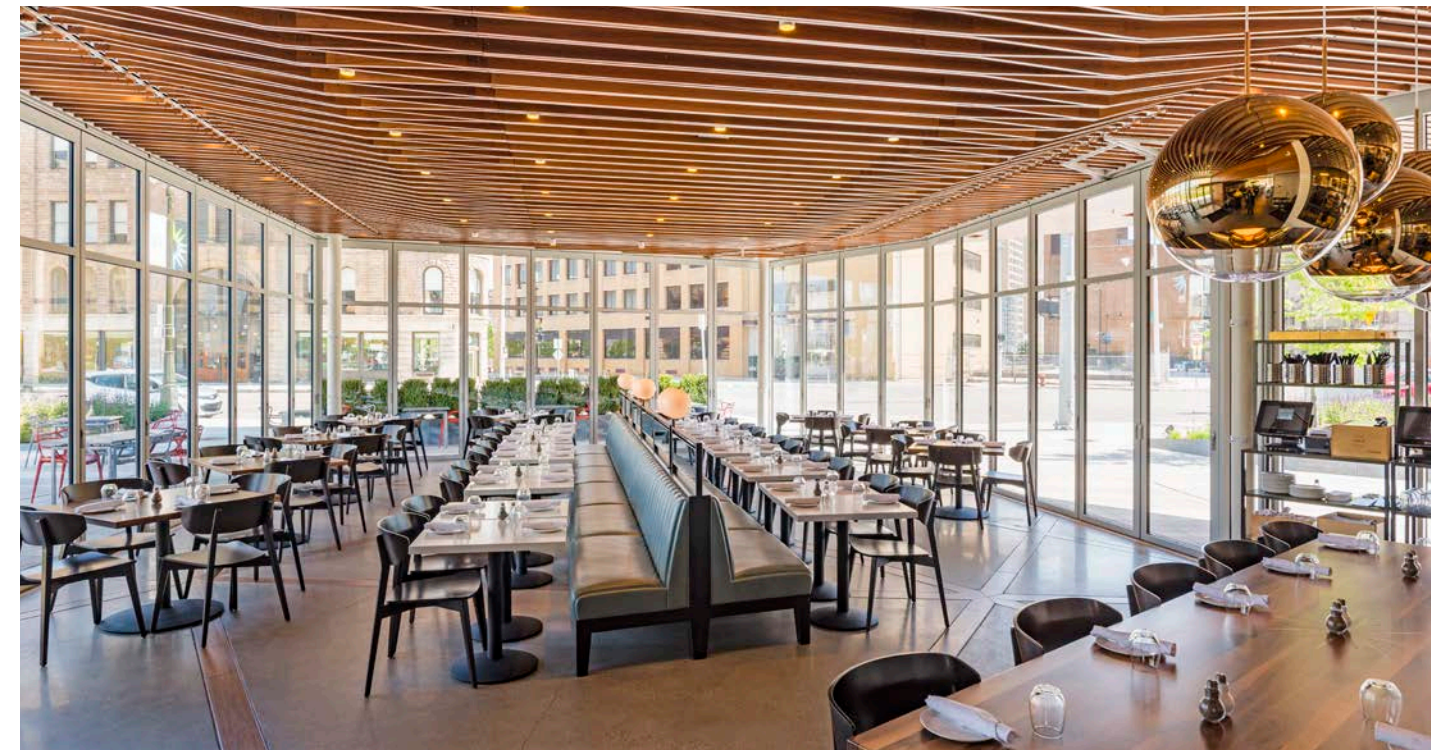


**Shape and Configuration Flexibility:** Straight, segmented curve, T-intersections, and open corner designs available. Unlimited widths possible.

# COMMERCIAL MARKETPLACE TESTED

NanaWall opening glass walls stand up to the daily commercial grind, as well as the challenges of wind, water, extreme temperatures, forced entry, impact, and structural load.

- Independent testing results are available for air, water, forced entry and impact, thermal performance, and structural load.
- STC ratings for sound attenuation are available for select systems.
- Swing panels are tested for 500,000 cycles and meet industry operational standards (AAMA920) for the SL45, SL70, HSW60, HSW75, PrivaSEE, and ClimaCLEAR systems.



## SECURE & DURABLE

- Multipoint locking entry doors as well as extra-long, tamper-resistant dual point locking rods between panels ensures each system meets or exceeds most forced entry testing for commercial grade door panels.
- Built-in adjustment and compensation points ensure continued ease of operation if building settling occurs.





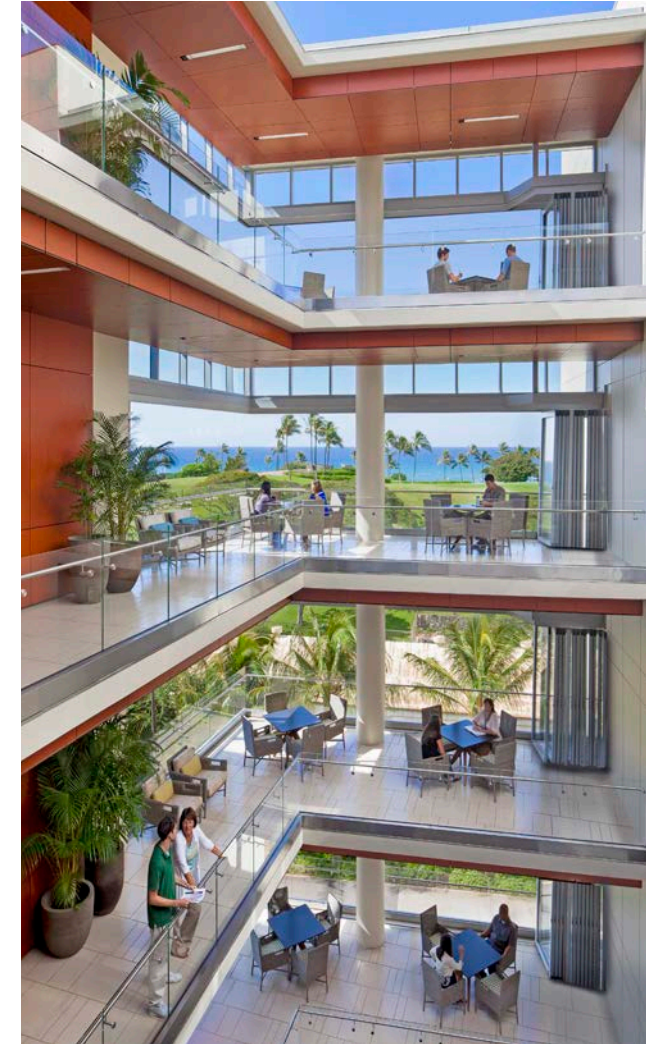
OFFICES / INTERIORS



RESTAURANTS



RELIGIOUS INSTITUTIONS



HOSPITALS



BANKS



HOTELS



AUTO SHOWROOMS



RETAIL



SPORTS VENUES

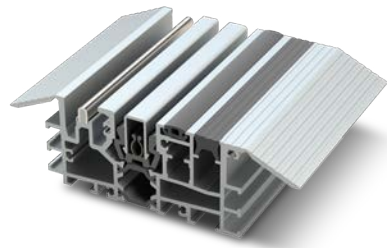


LIFESTYLE SHOPPING CENTERS

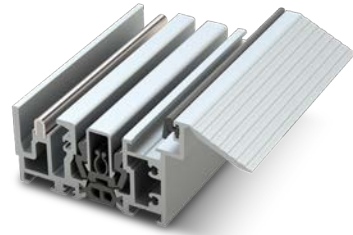


EDUCATIONAL FACILITIES

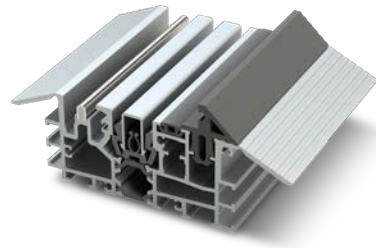
## SIX SILL OPTIONS



**LOW PROFILE SADDLE SILL**  
Inswing or Outswing



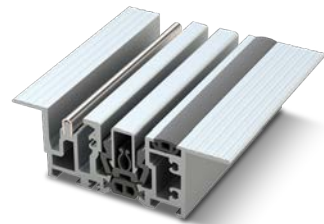
**HYBRID**  
Outswing



**LOW PROFILE SADDLE SILL with UniverSILL**



**LOW PROFILE RAISED**  
Inswing



**FLUSH\***



**MINIMAL SURFACE MOUNTED FLUSH\***

\* Flush and Minimal Surface Mounted ADA-compliant Sill Choices:

## GENERAL FOLDING SYSTEM PERFORMANCE DATA

\*\* Testing results vary per system. Please consult NanaWall or see the NanaWall Website for actual test data for each model and configuration.



**U-Value**  
as low as 0.19\*\*  
*(NFRC Tested and Labeled)*



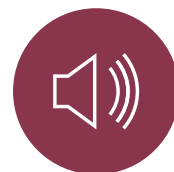
**Air Infiltration**  
as low as:  
@1.57 psf: 0.03\*\*  
@6.24 psf: 0.07\*\*



**Water Rating**  
as high as:  
No uncontrolled water entry at 9 psf\*\*



**Design Wind Load**  
as high as:  
Positive @70 psf\*\*  
Negative @100 psf\*\*



**Sound Transmission Rated**  
STC up to 45\*\*



**Cycle Tested**  
Swing doors: 500k  
Folding panels: 20k  
*(Equal to 27 years of use)*

## FOLDING SYSTEM FINISHES\*

\* For other than folding systems, please see NanaWall.com.

### Standard 50 Finishes for Aluminum and Clad Systems

50 standard colors are available in powder coat and anodized finishes.  
For accurate color swatch examples, please request our Powder Coating Finish Options brochure.

#### STANDARD POWDER COAT OPTIONS



Custom Color Matching Available

### Clad Systems Finish Options

Standard woods include Sapeli Mahogany, Pine, Meranti and Western Hemlock.  
For accurate wood representation, please request a wood sample.



Contact NanaWall for other wood options.



# COMMERCIAL OPENING GLASS WALLS



- NanaWall opening glass walls are available factory direct through local architectural design representatives across North America. Our Certified Installation Network option ensures correct installation with speed and precision.
- From design to installation—we're here to help. Our Dedicated Design Team can answer your questions and assist with planning, ordering and optimizing your NanaWall options.

## THE ONE AND ONLY NANAWALL

At NanaWall, design is as much about how it looks as how it works. For over 35 years, we have been leading the industry in developing and refining our opening glass walls to create solutions that visually harmonize with space, transform the architectural experience, and provide decades of enduring performance.

**NanaWall**<sup>®</sup>  
Boundaries **Unbound**<sup>™</sup>

[NanaWall.com](https://www.NanaWall.com)

©2024 NANA WALL SYSTEMS, INC. Nana Wall Systems reserves the right to change specifications without notice. Testing results vary per system. See [NanaWall.com](https://www.NanaWall.com) for actual test data. NanaWall and the NanaWall logo are trademarks of Nana Wall Systems, Inc. Cero is a registered trademark of Solarlux GmbH. r4-0124

**SOLARLUX**<sup>®</sup>  
technology